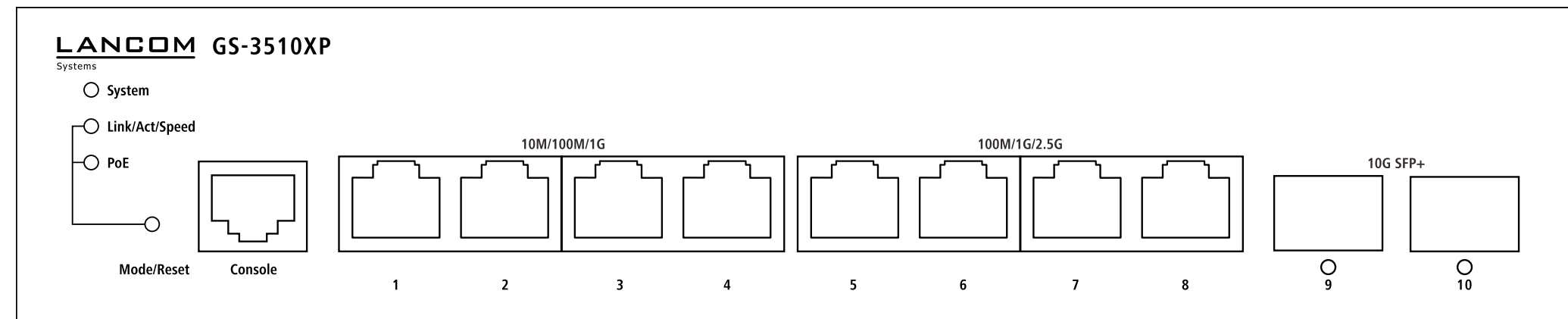
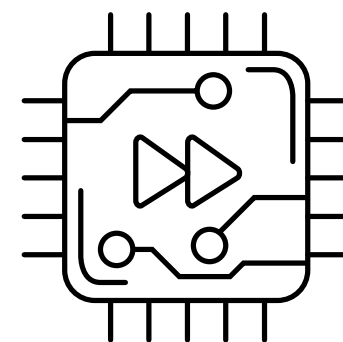
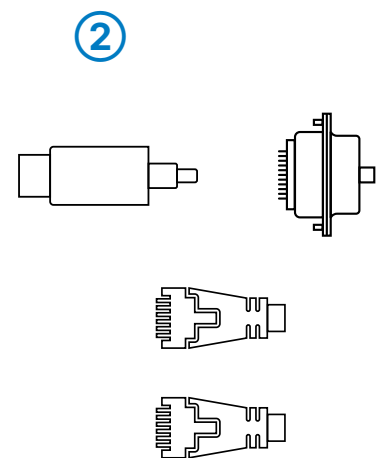


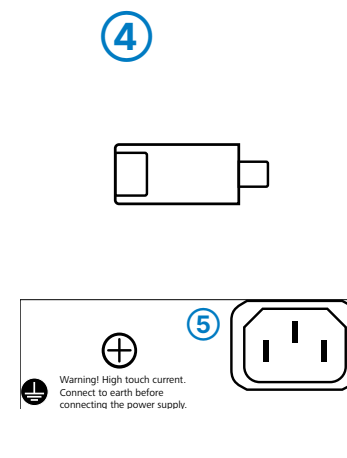
# Hardware Quick Reference LANCOM GS-3510XP



- 1 Configuration interface (Console)**  
Connect the configuration interface via the included serial configuration cable to the serial interface of the device you want to use for configuring / monitoring the switch.
- 2 TP Ethernet interfaces 10M/100M/1G**  
Use Ethernet cables to connect the interfaces 1 to 4 to further network devices.
- 3 TP Ethernet interfaces 100M/1G/2.5G**  
Use Ethernet cables to connect the interfaces 5 to 8 to further network devices.



- 4 SFP+ interfaces 10G**  
Insert suitable LANCOM SFP modules into the SFP+ interfaces 9 to 10. Choose cables which are compatible with the SFP+ modules and connect them as described in the SFP+ module's documentation.
- 5 Power connector (device back side)**  
Supply power to the device via the power connector. Please use the IEC power cable supplied or a country-specific LANCOM Power Cord.



**Before initial startup, please make sure to take notice of the information regarding the intended use in the enclosed installation guide!**

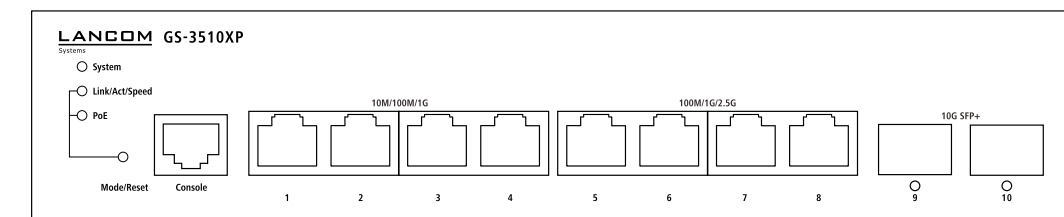
**Operate the device only with a professionally installed power supply at a nearby power socket that is freely accessible at all times.**



**Please observe the following when setting up the device**

- The power plug of the device must be freely accessible.
- For devices to be operated on the desktop, please attach the adhesive rubber footpads
- Do not rest any objects on top of the device
- Keep all ventilation slots on the side of the device clear of obstruction
- Mount the device into a 19" unit in a server cabinet using the provided screws and mounting brackets.
- Please note that support service for third-party accessories is excluded.

## Mounting & connecting



- A** System / Link/Act/Speed / PoE
- B** Mode/Reset button
- C** TP Ethernet ports 10M/100M/1G
- D** TP Ethernet ports 100M/1G/2.5G
- E** SFP+ ports 10G

A System / Link/Act/Speed / PoE	
System: off	Device switched off
System: green	Device operational
System: red	System error, please check syslog / error log
Link/Act/Speed: green	Port LEDs show link / activity status or port speed
PoE: green	Port LEDs show PoE status

B Mode/Reset button	
Short press	Port LED mode switch
~5 sec. pressed	Device restart
7~12 sec. pressed	Configuration reset and device restart

C TP Ethernet ports 10M/100M/1G	
<b>LEDs switched to Link/Act/Speed mode</b>	
Off	Port inactive or disabled
Green	Link 1 Gbps
Green, blinking	Data transfer, link 1 Gbps
Orange	Link < 1 Gbps
Orange, blinking	Data transfer, link < 1 Gbps
<b>LEDs switched to PoE mode</b>	
Off	Port inactive or disabled
Green	Port enabled, power supply to connected device
Orange	PoE function error
Orange, blinking	PoE overload

D TP Ethernet ports 100M/1G/2.5G	
<b>LEDs switched to Link/Act/Speed mode</b>	
Off	Port inactive or disabled
Orange	Link 100 Mbps
Orange, blinking	Data transfer, link 100 Mbps
Green	Link 1 Gbps / 2.5 Gbps
Green, blinking	Data transfer, link 1 Gbps / 2.5 Gbps
<b>LEDs switched to PoE mode</b>	
Off	Port inactive or disabled
Green	Port enabled, power supply to connected device
Orange	PoE function error
Orange blinkend	PoE overload

E SFP+ ports 10G	
<b>LEDs switched to Link/Act/Speed mode</b>	
Off	Port inactive or disabled
Green	Link 1 Gbps
Green, blinking	Data transfer, link 1 Gbps
Blue	Link 10 Gbps
Blue, blinking	Data transfer, link 10 Gbps

Hardware	
Power supply	Internal power supply unit (110–230 V, 50–60 Hz)
Power consumption	Max. 165 W (thereof 130 W PoE budget)
Environment	Temperature range 0–40°C; short-term temperature range 0–50°C; humidity 10–90%, non-condensing
Housing	Robust metal housing, 220 x 44 x 242 mm (W x H x D), network connectors on the front
Number of fans	1 quiet fan
Interfaces	
ETH	4 TP Ethernet ports 10 / 100 / 1000 Mbps 4 TP Ethernet ports 10 / 100 / 2500 Mbps 2 SFP+ ports 10 Gbps 10 concurrent Ethernet ports in total
Package Content	
Documentation	Quick Reference Guide (DE/EN), Installation Guide (DE/EN)
Mounting brackets	2 19" brackets for rackmounting
Cable	1 IEC power cord, 1 serial configuration cable 1.5 m

Hereby, LANCOM Systems GmbH | Adenauerstrasse 20/B2 | D-52146 Wuerselen, declares that this device is in compliance with Directives 2014/30/EU, 2014/35/EU, 2011/65/EU, and Regulation (EC) No. 1907/2006. The full text of the EU Declaration of Conformity is available at the following Internet address: [www.lancom-systems.com/doc](http://www.lancom-systems.com/doc)