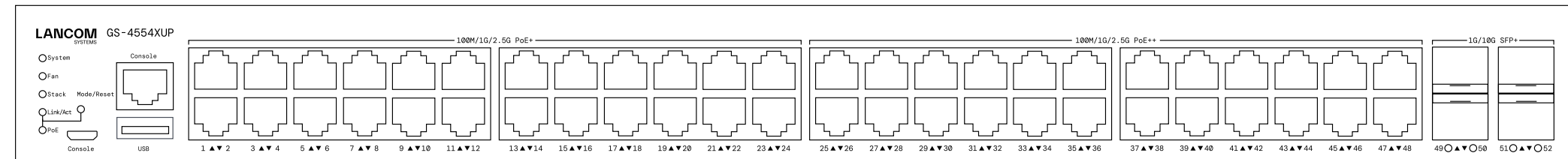
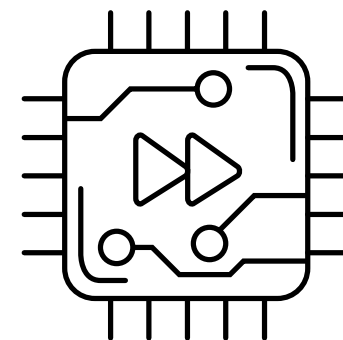


# Hardware Quick Reference

## LANCOM GS-4554XUP

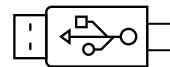


- ① Configuration interfaces RJ-45 & micro USB (Console)
- ② USB interface
- ③ TP Ethernet interfaces 100M / 1G / 2.5G PoE+
- ④ TP Ethernet interfaces 100M / 1G / 2.5G PoE++
- ⑤ SFP+ interfaces 1G / 10G

**① Configuration interfaces RJ-45 & micro USB (Console)**  
Connect the configuration interface via the included micro USB cable to the USB interface of the device you want to use for configuring / monitoring the switch. Alternatively, use the RJ-45 interface with the provided serial configuration cable.



**② USB interface**  
Connect a USB stick to the USB interface to store general configuration scripts or debug data. You can also use this interface to upload a new firmware.



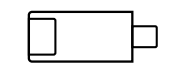
**③ TP Ethernet interfaces 100M / 1G / 2.5G PoE+**  
Connect the interfaces 1 to 24 via Ethernet cable with at least CAT5e / S/FTP standard to your PC or a LAN switch.



**④ TP Ethernet interfaces 100M / 1G / 2.5G PoE++**  
Connect the interfaces 25 to 48 via Ethernet cable with at least CAT5e / S/FTP standard to your PC or a LAN switch.



**⑤ SFP+ interfaces 1G / 10G**  
Insert suitable LANCOM SFP modules into the SFP+ interfaces 49 to 52. Choose cables which are compatible with the SFP modules and connect them as described in the SFP modules mounting instructions: [www.lancom-systems.com/SFP-module-MI](http://www.lancom-systems.com/SFP-module-MI).



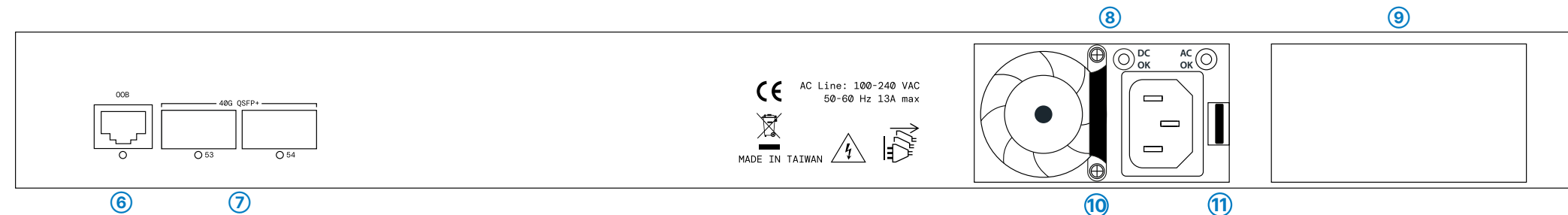
**⑥ OOB interface (rear panel)**  
Use an Ethernet cable to connect this out-of-band service port for an IP interface independent of the switching plane for management tasks or connection to a monitoring server.

**⑦ QSFP+ interfaces 40G (rear panel)**  
Plug suitable LANCOM QSFP+ modules into the QSFP+ interfaces 53 and 54. Select cables suitable for the QSFP+ modules and connect them as described in the SFP modules mounting instructions: [www.lancom-systems.com/SFP-module-MI](http://www.lancom-systems.com/SFP-module-MI).

**⑧ Power supply module with mains connection socket (rear panel)**  
Supply the device with power via the power supply socket of the power supply module. Use the supplied power cord or a country-specific LANCOM power cord.

To remove the power supply module, disconnect the module from the power supply and then pull the plug out of the module. While pressing the release lever ⑩ to the left, you can pull the module out of the device by the handle ⑪.

**⑨ Additional slot for power supply module with mains connection socket (rear panel)**  
To install an additional power supply module, remove the corresponding module bay cover by loosening both associated screws and push the power supply module in as far as it will go until the release lever ⑩ audibly engages. Check by pulling the handle ⑪ that the module cannot be removed from the bay without the release lever ⑩ being pressed to the left.



**Before initial startup, please make sure to take notice of the information regarding the intended use in the enclosed installation guide!**

**Operate the device only with a professionally installed power supply at a nearby power socket that is freely accessible at all times.**

**The power plug of the device must be freely accessible.**

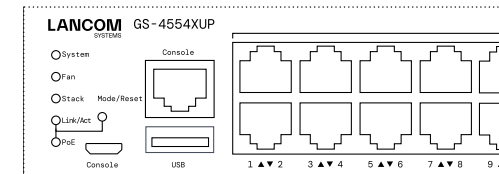
**Please note that support for third-party accessories (SFP and DAC) is not provided.**



**Please observe the following when setting up the device**

- For devices to be operated on the desktop, please attach the adhesive rubber footpads.
- Do not rest any objects on top of the device and do not stack multiple devices.
- Keep all ventilation slots clear of obstruction.
- Mount the device into a 19" unit in a server cabinet using the provided screws and mounting brackets.
- Both slide-in rails are attached as shown in the accompanying installation instructions [www.lancom-systems.com/slide-in-MI](http://www.lancom-systems.com/slide-in-MI).

### Mounting & connecting



- A System / Fan / Stack / Link/Act / PoE
- B Mode / Reset button
- C D TP Ethernet ports 100M / 1G / 2.5G PoE+ / PoE++

**A System / Fan / Stack / Link/Act / PoE**

|                 |   |
|-----------------|---|
| System: green   | Device operational  |
| System: red     | System error, please check syslog / error log                           |
| Fan: red        | Fan error   |
| Stack: green    | As manager: port activated and connected with standby manager connected |
| Stack: orange   | As standby manager: port activated and connected to connected manager   |
| Link/Act: green | Port LEDs show link / activity  |
| PoE: green      | Port LEDs show PoE status   |

**B Mode / Reset button**

|                                  |  |
|----------------------------------|--|
| Short press                      | Switching the port LED display         |
| ~ 5 seconds pressed              | Device restart                         |
| Pressed until all port LEDs glow | Configuration reset and device restart |

**C D TP Ethernet ports 100M / 1G / 2.5G PoE+ / PoE++**

**LEDs switched to Link/Act/Speed mode**

|                  |                                      |
|------------------|--------------------------------------|
| Off              | Port inactive or disabled            |
| Green            | Link 2500 - 1000 Mbps                |
| Green, blinking  | Data transfer, link 2500 - 1000 Mbps |
| Orange           | Link < 1000 Mbps                     |
| Orange, blinking | Data transfer, link < 1000 Mbps      |

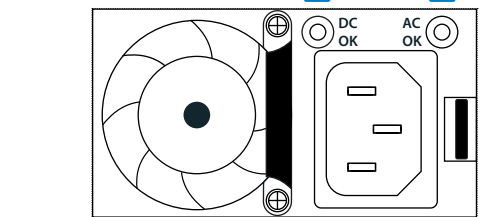
**LEDs switched to PoE mode**

|        |  |
|--------|--|
| Off    | Port inactive or disabled                      |
| Green  | Port enabled, power supply to connected device |
| Orange | PoE function error                             |

**E SFP+ ports 1G / 10G**

|                 |                             |
|-----------------|-----------------------------|
| Off             | Port inactive or disabled   |
| Blue            | Link 10 Gbps                |
| Blue, blinking  | Data transfer, link 10 Gbps |
| Green           | Link 1 Gbps                 |
| Green, blinking | Data transfer, link 1 Gbps  |

**F G Power supply unit (Geräterückseite)**

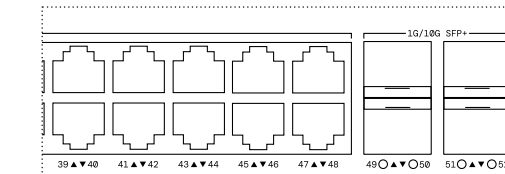


**H OOB port (rear panel)**

|       |                   |
|-------|-------------------|
| Off   | OOB port inactive |
| Green | Link 1000 Mbps    |

**I QSFP+ ports 40G (rear panel)**

|                 |                             |
|-----------------|-----------------------------|
| Off             | Port inactive or disabled   |
| Green           | Link 40 Gbps                |
| Green, blinking | Data transfer, link 40 Gbps |



- D E SFP+ ports 1G / 10G

**E SFP+ ports 1G / 10G**

|                 |                             |
|-----------------|-----------------------------|
| Off             | Port inactive or disabled   |
| Blue            | Link 10 Gbps                |
| Blue, blinking  | Data transfer, link 10 Gbps |
| Green           | Link 1 Gbps                 |
| Green, blinking | Data transfer, link 1 Gbps  |

**F G Power supply unit (Geräterückseite)**

|                        |                                |
|------------------------|--------------------------------|
| DC OK: green, blinking | Secondary power supply OK      |
| DC OK: red, blinking   | Secondary power supply failure |
| AC OK: green, blinking | Primary power supply OK        |
| AC OK: red, blinking   | Primary power supply failure   |

**H OOB port (rear panel)**

|       |                   |
|-------|-------------------|
| Off   | OOB port inactive |
| Green | Link 1000 Mbps    |

**I QSFP+ ports 40G (rear panel)**

|                 |                             |
|-----------------|-----------------------------|
| Off             | Port inactive or disabled   |
| Green           | Link 40 Gbps                |
| Green, blinking | Data transfer, link 40 Gbps |

**H OOB port (rear panel)**

|       |                   |
|-------|-------------------|
| Off   | OOB port inactive |
| Green | Link 1000 Mbps    |

**I QSFP+ ports 40G (rear panel)**

|                 |                             |
|-----------------|-----------------------------|
| Off             | Port inactive or disabled   |
| Green           | Link 40 Gbps                |
| Green, blinking | Data transfer, link 40 Gbps |

**H OOB port (rear panel)**

|       |                   |
|-------|-------------------|
| Off   | OOB port inactive |
| Green | Link 1000 Mbps    |

**I QSFP+ ports 40G (rear panel)**

|                 |                             |
|-----------------|-----------------------------|
| Off             | Port inactive or disabled   |
| Green           | Link 40 Gbps                |
| Green, blinking | Data transfer, link 40 Gbps |

**H OOB port (rear panel)**

|       |                   |
|-------|-------------------|
| Off   | OOB port inactive |
| Green | Link 1000 Mbps    |

**I QSFP+ ports 40G (rear panel)**

|                 |                             |
|-----------------|-----------------------------|
| Off             | Port inactive or disabled   |
| Green           | Link 40 Gbps                |
| Green, blinking | Data transfer, link 40 Gbps |

**H OOB port (rear panel)**

|       |                   |
|-------|-------------------|
| Off   | OOB port inactive |
| Green | Link 1000 Mbps    |

**I QSFP+ ports 40G (rear panel)**

|                 |                             |
|-----------------|-----------------------------|
| Off             | Port inactive or disabled   |
| Green           | Link 40 Gbps                |
| Green, blinking | Data transfer, link 40 Gbps |

**Hardware**

|                |   |
|----------------|---|
| Power supply   | Exchangeable power supply (110-230 V, 50-60 Hz)   |
| Environment    | Temperature range 0-40° C; short-term temperature range 0-50° C; humidity 10-90 %, non-condensing   |
| Housing        | Robust metal housing, 1 HU with removable mounting brackets and slide-in rails, network connections at front and rear, dimensions 442 x 44 x 440 mm (W x H x D) |
| Number of fans | 2   |

**Interfaces**

|             |  |
|-------------|--|
| QSFP+       | 2 QSFP+ 40 Gbps uplink ports for connection to superordinate core switches or content servers, can also be configured as stacking ports via software     |
| TP Ethernet | 24 TP Ethernet ports 100 / 1000 / 2500 Mbps PoE+<br>24 TP Ethernet ports 100 / 1000 / 2500 Mbps PoE++  |
| SFP+        | 4 SFP+ 1 / 10 Gbps, uplink ports for connection to superordinate core switches or content servers, can also be configured as stacking ports via software |
| Console     | 1 RJ-45 / 1 Micro USB  |
| USB         | 1 USB host   |
| OOB         | 1 OOB  |

**Package Content**

|                   |   |
|-------------------|---|
| Mounting brackets | 2 19" mounting brackets, 2 slide-in rails for rear stabilization in 19" racks   |
| Power supply      | 1 exchangeable power supply LANCOM SPSU-920, expandable to 2 LANCOM SPSU-920 power supplies (hot swappable, for redundancy operation) |
| Cables            | 1 IEC power cord, 1 serial configuration cable, 1 micro USB configuration cable   |

Hereby, LANCOM Systems GmbH | Adenauerstrasse 20/B2 | D-52146 Wuerselen, declares that this device is in compliance with Directives 2014/30/EU, 2014/35/EU, 2011/65/EU, and Regulation (EC) No. 1907/2006. The full text of the EU Declaration of Conformity is available at the following Internet address: [www.lancom-systems.com/doc](http://www.lancom-systems.com/doc)