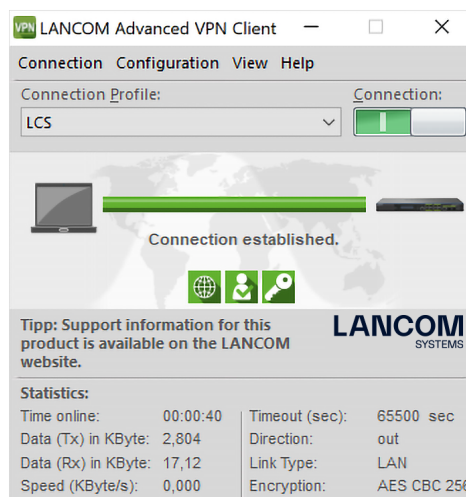


R&S® LANCOM Advanced VPN Client Windows

Universal VPN Software Client for secure corporate network access when traveling



The R&S® LANCOM Advanced VPN Client provides mobile employees with encrypted access to the company network, whether they are at their home office, on the road, or even abroad. The application is extremely easy to use; once VPN access (virtual private network) has been configured, a click of the mouse is all it takes to establish a secure VPN connection over the best available connection medium, also via cellular. Further data protection comes with the integrated stateful inspection firewall, support of all IPSec protocol extensions, and numerous other security features.

- ▶ IPSec VPN client for Windows
- ▶ Integrated stateful inspection firewall for secure Internet access
- ▶ Integrated mobile dialer including Budget Manager for full cost control
- ▶ Prioritization of Voice over IP data
- ▶ IPSec-over-HTTPS (based on NCP VPN Path Finder technology)
- ▶ Seamless roaming – VPN connections remain intact even with media changes
- ▶ Support of IPv6 VPN

R&S® LANCOM Advanced VPN Client Windows

Secure company network access when traveling

The R&S® LANCOM Advanced VPN Client for Windows provides users with a secure VPN tunnel to access the company network. No matter whether the user is mobile on the road, in the home office, or even abroad—the R&S® LANCOM Advanced VPN Client provides a secure channel to the company network, anytime and anywhere. And perfect when traveling: Seamless roaming maintains the channel even in case of a media change.

Maximum data security

Equipped with a stateful inspection firewall, the R&S® LANCOM Advanced VPN Client automatically detects secure and unsecure networks for protected communication at all times. Together with other security features such as the support of all current IPSec protocols, digital certificates, and many more, the client ensures that all data are securely transmitted at all times.

Full cost control

The Budget Manager integrated into the Mobile Network Dialer allows you to set time and volume quotas for full cost control. What's more, the option "No roaming allowed" disables data roaming to avoid additional costs. Also included: An automatic connection control with a range of cost-control functions provides a constant overview of charges, online time, and transfer volumes.

Fast and easy configuration thanks to the Setup Wizard and "1-Click-VPN"

The integrated Setup Wizard in LANconfig supports the user with fast and easy VPN configuration. Automatic media detection saves you having to define the connection type manually—it is selected automatically depending on the available medium. Once installed, the VPN connection is established intuitively with a single click.

R&S® LANCOM Advanced VPN Client Windows

Operating systems	
Microsoft*	<ul style="list-style-type: none"> ▶ Windows 11 ▶ Windows 10
Languages	German, English
*) Note	On Intel x86-64 processor architecture. An overview about older R&S® LANCOM Advanced VPN Client versions can be found at our knowledgebase https://support.lancom-systems.com/knowledge/x/Fo07Ag
Communication	
Connection management	Communication only via secured VPN tunnel or with simultaneous unsecured Internet access. Manual or automatic connection establishment, adjustable hold-times with automatic connection establishment, charges, time and connection limit with warning, ISDN channel bundling with adjustable threshold value. Always-on mode for Windows 11, 10, and 8.1 particularly tablets
Connection types	VPN connection over existing IP connection (LAN / WLAN) or direct management of analog and DSL modems (PPPoE), ISDN adapters (CAPI 2.0) as well as GPRS, UMTS and LTE cards with support of the Mobile Broadband interface of Windows 7. Alternative direct dial-in without encryption (e.g. ISDN), supports up to 5 remote networks per access profile
Protocols	All IP-based protocols, NetBIOS/IP (Windows Networking), PPP, PPPoE and PPTP
VPN/IPsec	
Standards	Standard-conform IPsec with ESP (Encapsulation Security Payload) and/or AH (Authentication Header)
FIPS inside	The IPsec client integrates a cryptographic algorithm conformant to the FIPS standard. The embedded cryptographic module is certified according to FIPS 140-2 (Certificate #1051). FIPS conformance will always be maintained when any of the following algorithms are used for establishment and encryption of the IPsec connection: Diffie Hellman Group: Group 2 or higher (DH starting from a length of 1024 bits) Hash Algorithms: SHA1, SHA 256, SHA 384, or SHA 512 Bit Encryption Algorithms: AES with 128, 192 or 256 Bit or Triple DES
Encryption	AES-CBC/AES-CTR/AES-GCM (128, 192 or 256 bit), 3-DES (168 bit), RSA (1024 or 2048 bit)
Hashes	SHA-512, SHA-384, SHA-256, SHA-1, MD-5
IKE operating modes	IKE with pre/shared keys or certificates, IKE Main or Aggressive Mode, IKEv2, DH groups 1, 2, 5, 14-21, 25-30, Re-keying after adjustable transfer volumes or time. In combination with R&S® LANCOM VPN remote sites, an IKE extension enables separate pre-shared keys to be used for each user in Aggressive Mode as well.
Network coupling	Coupling of IPv4 networks via IPv4/IPv6 WAN connections, coupling of IPv6 networks via IPv4/IPv6 WAN connections
Additional functions	
IPSec over HTTPS	To overcome VPN filter (e.g. port 500 blocking for IKE). R&S® LANCOM VPN router and gateways with LCOS 8.0 or higher needed. IPSec over HTTPS is based on the NCP VPN Path Finder Technology.
XAUTH	For authentication by username/password
IKE config mode	For assignment of IP parameters (local IP address, DNS and WINS server) to the client
IPCOMP	IPCOMP data compression (LZS and Deflate) for optimal bandwidth exploitation
Dead-Peer-Detection	Dead-peer detection (DPD) for connection monitoring
IKEv2 redirect	Support for IKEv2 redirect according to RFC 5685
IKEv2 Split-DNS	Split-DNS allows the DNS resolution of internal domains, i.e. "*.company.com" via an existing VPN tunnel, whereas all other DNS requests will be sent to a public DNS server.
IKEv2 Cookie Challenge	The IKEv2 cookie challenge mechanism is used to defend against DoS attacks on a VPN gateway.
NAT-Traversal	NAT-Traversal (NAT-T) to overcome routers not capable of IPsec masking, or when using AH
RAS user template	Configuration of all VPN client connections in IKE Config-Mode via a single entry in the R&S® LANCOM VPN Gateway
EAP-MD5	For extended authentication of layer-2 devices such as switches or WLAN access points
Seamless Roaming	VPN connections stay uninterrupted even when the media (LAN, WLAN, cellular networks) changes and no new session has to be started (in conjunction with R&S® LANCOM routers with LCOS 8.6)

R&S® LANCOM Advanced VPN Client Windows

Additional functions	
Biometric authentication	Secure against unauthorised access by third parties via biometric authentication (e.g. fingerprint or face detection).
Windows certification store (CSP)	For the use of user certificates in Windows certificate store
PKI	
Certificates	Public Key Infrastructure according to X.509v3, Entrust SmartCards: PKCS#11, TCOS 1.2 and 2.0 over CT-API or PC/SC Soft certificates: PKCS#12
Certificate extension	Control of, and notice about, a certificate's validity period
Certificate revocation lists (CRL)	Control of the CRL and ARL (Certificate and/or Authority Revocation List)
Firewall	
Stateful inspection Firewall	Stateful inspection firewall for IPv4 and IPv6, direction-dependant packet filter with IP- and port ranges per protocol, LAN-adapter protection to protect PCs with active VPN connections from attacks from other LAN users, IP broadcast and NetBIOS/IP filter
Installation	
Wizards	Tailor-made Setup Wizards are available for all types of connection
Administration	
Password protection	Password protection for configuration and profile management, configuration rights can be defined for each function area, display/hide parameter fields
Network diagnostics	Easy checking of internet accessibility through PING and DNS request
Automatic software updates	Software can search for new versions in definable time intervals
MSI installer	Software distribution via MSI installer
Activation / Deactivation	
Online/offline activation	After installation, the software will function for a period of 30 days. Activation must take place within these 30 days. This can be conducted either directly online (requiring Internet access from the corresponding computer) or offline (requiring Internet access from any other computer). Activation is anonymous. No user-specific data of any kind is transmitted.
Deactivation	The licenses for the R&S® LANCOM Advanced VPN Client are single-device licenses and may only be activated and operated on one system at a time. The deactivation feature of the R&S® LANCOM Advanced VPN Client offers you a convenient way to deactivate a license on a system that is no longer in use and to activate it again on a new system. (as of Version 2.32, Build 128)
Updates	
Update*	An update to a later version is generally available for free and can be carried out without purchasing a new license key. An update provides all of the previous bugfixes from earlier versions.
Upgrade	With an upgrade to the current version, users of older versions can take advantage of the new features in the current version. An upgrade is subject to a fee and requires a new upgrade license key to be purchased, along with a new activation. Upgrades are only possible with a maximum of 2 software versions between the version that was activated originally and the current version. Please visit www.lancom-systems.com/avc for details.
*) Note	As of version 3.10, a license key of the same version is compulsory for the activation of the Client. An activation, respectively the installation of an update with older license keys will no longer be possible. This applies from now on for every upcoming major version.
Support	
Support	Support via Internet
Service	30-day demo version from www.lancom-systems.com
Package content	
Manual	Printed Quick Installation Guide (DE/EN)
Key	Printed license key

R&S® LANCOM Advanced VPN Client Windows

Item numbers	
Item no. 61600	R&S® LANCOM Advanced VPN Client Windows
Item no. 61601	R&S® LANCOM Advanced VPN Client Windows (10 Bulk)
Item no. 61602	R&S® LANCOM Advanced VPN Client Windows (25 Bulk)
Options	
Item no. 61603	R&S® LANCOM Upgrade Advanced VPN Client Windows (for activating the new functions up to two major releases)
Item no. 61604	R&S® LANCOM Upgrade Advanced VPN Client Windows (10 bulk) (for activating the new functions up to two major releases)
Item no. 61605	R&S® LANCOM Upgrade Advanced VPN Client Windows (25 Bulk) (for activating the new functions up to two major releases)

Rohde & Schwarz Networks and Cybersecurity GmbH
 Adenauerstr. 20/B2
 52146 Wuerselen | Germany
info.rs-nc@rohde-schwarz.com | www.rohde-schwarz.com/networks-and-cybersecurity

R&S and Rohde & Schwarz are trademarks of Rohde & Schwarz GmbH & Co. KG, registered or used, among others, in Germany, the EU, the USA, China, and other countries. Other names or designations used may be registered trademarks of different companies or owners. This document contains forward-looking statements regarding products and product features. The publisher reserves the right to change these at any time without stating reasons. No liability is accepted for technical inaccuracies or omissions. 06/2026

ROHDE & SCHWARZ
 Make ideas real

