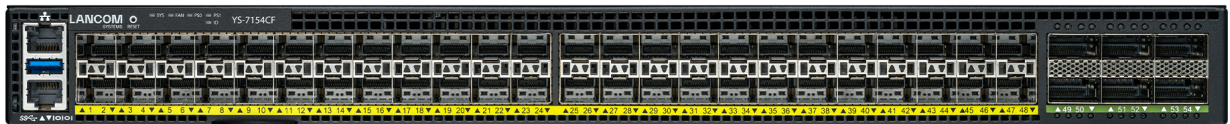


R&S® LANCOM YS-7154CF

25G Stackable Fiber Aggregation Switch for campus networks



In data-intensive, distributed campus networks, the R&S® LANCOM YS-7154CF ensures the necessary performance and high availability of network resources. With 48x 25G SFP28 and 6x 100G QSFP28 ports, the switch offers maximum connection flexibility in mixed 1G-100G environments, providing a total of 3,6 Tbps switch capacity (full duplex). Depending on the size of the installation, the R&S® LANCOM YS-7154CF can be integrated either as an aggregation switch (distribution base) between core and access switches (three-tier design) or as a core switch resp. “collapsed backbone” at the top level to the WAN (two-tier design) to create hierarchical switch infrastructures. Reliable, high-performance operation even in bandwidth-intensive networks is ensured by Virtual Port Channel (VPC) or stacking. Additional fail-safety is provided two integrated power supplies, five hot-swappable fan modules, and a selectable cooling concept. Centralized network management with real-time monitoring of the device status is automated and location-independent via the R&S® LANCOM Management Cloud or using the industry-standard web GUI and CLI.

- ▶ Multi-Gigabit aggregation switch with 48x 25G SFP28 ports and 6x 100G QSFP28 ports, including 4x Flex stacking ports
- ▶ Support of Virtual Port Channel (VPC or MC-LAG)
- ▶ Full layer 3 functionality thanks to VRRP, DHCP, static and policy-based dynamic routing via OSPF v2/v3 and BGP4
- ▶ Two variants available with different fan modules for front-to-back (F2B) or back-to-front (B2F) airflow for optimum cooling in 19" racks
- ▶ Including 2 redundant, hot-swappable PSU and 5 hot-swappable fans for maximum reliability
- ▶ Including 2x 19" mounting brackets and 2x 19" telescopic rails (switch slide-in rails) for 19" rack mounting
- ▶ Secure remote management through TACACS+, SSH, SSL, and SNMPv3
- ▶ Industry standard CLI
- ▶ Cloud-managed LAN and switch stacking for fast configuration and convenient management via the R&S® LANCOM Management Cloud
- ▶ Limited R&S® LANCOM Lifetime Warranty (LLW) included

R&S®LANCOM YS-7154CF

Multi-Gigabit performance with 54 industry-standard ports

With 48x SFP28 and 6x QSFP28 ports, the R&S®LANCOM YS-7154CF offers the necessary wire-speed performance of 1.8 Tbit/s and corresponding switch capacity of 3.6 Tbit/s in full duplex mode for the construction of a future-proof, three-tier campus network. It provides sufficient performance to do justice to the advancing digitalization. With a view to minimizing the total cost of ownership (TCO), this R&S®LANCOM switch comes with an operating software that is not limited in its lifetime. In addition, all ports of the R&S®LANCOM CS-8132F are natively available and comply with the industry standard. This eliminates the need for a costly modular design, and no proprietary accessories are required when switching to R&S®LANCOM core switches

Network design with 100% uptime via VPC / MC-LAG

Virtual Port Channel (VPC), or Multi-chassis Link Aggregation Group (MC-LAG), is the preferred solution for increasing the reliability of large network infrastructures. If you link two R&S®LANCOM YS-7154CF in a VPC network and connect the underlying network components redundantly, the other switch remains active in the event of a failure or during in-service software update (ISSU) of one of the VPC-connected switches, thus ensuring 100% uptime. This is possible because both switches remain physically independent devices that merely form a virtual network. In addition, the link speed of the underlying network components is multiplied, as a VPC network allows multiple connections to the underlying level (active/active). For constant data forwarding, the switches exchange important information about the network, such as MAC tables, via their peer link.

Flexible, investment-proof network topologies with high-performance stacking

As a high-performance distribution instance for setting up hierarchical switch infrastructures, the R&S®LANCOM YS-7154CF flexibly networks aggregation and access switches in large, distributed enterprise networks. Thanks to stacking functions, a network uptime of almost 100% can be realized, as several physical switches are combined and efficiently managed as one logical unit. In the event of a firmware update, the stack is restarted, for which a maintenance window must be scheduled. The entire stack can be conveniently managed and monitored via cloud-managed switch stacking using the R&S®LANCOM Management Cloud.

Maximum operational reliability with redundancies and airflow design

The R&S®LANCOM YS-7154CF is equipped as standard with two hot-swappable power supply units for fast and uninterrupted replacement. Additional load capacity is provided by five replaceable fans. These can also be removed during operation. The switch achieves optimum cooling performance in the rack environment thanks to two hardware variants with different airflow designs and matching power supply units and fans: With a front-to-back or back-to-front airflow direction (F2B variant / B2F variant), the R&S®LANCOM YS-7154CF meets the different cooling requirements. This extends the service life of the product and increases the flexibility of use.

Cloud-managed LAN with port templates and Secure Terminal Access

With the R&S®LANCOM Management Cloud (R&S®LMC) and Cloud-managed LAN, the R&S®LANCOM YS-7154CF offers quick and easy network integration as well as automatic provision of the configuration across locations with the a click of a mouse. Time-consuming individual device and switch port configurations are now a matter of the past. The targeted switch rollout via the R&S®LMC enables automatic VLAN assignment to switch ports including practical switch port profiles and therefore “zero-touch” assignment to the devices – a major efficiency gain, especially for stack units and with different port assignments at different locations. Secure Terminal Access provides access to the command line of the R&S®LANCOM switch (“CLI tunneling”) directly from the R&S®LANCOM Management Cloud – encrypted and without leaving the cloud interface. Secure Terminal Access provides expert functions as well as extensive diagnostic and troubleshooting commands for the devices. Some highlights include: “trace” and “ping” commands for quick troubleshooting, access to low-level configuration parameters and detailed statistics of the LCOS SX operating system as well as secure remote access to third-party devices in the local network via the integrated SSH client.

R&S® LANCOM YS-7154CF

Configurable access control and secure remote management

The R&S® LANCOM YS-7154CF stops rogue clients from gaining unauthorized access to the network. This is ensured by secured access control on all ports as per IEEE 802.1X (port-based, single, multi, and MAC-based) or by ACLs (access control lists). Thanks to secure communication protocols such as SSH, SSL, and SNMPv3, professional remote management of the network is possible. The switch also supports the TACACS+ protocol for authentication, authorization, and accounting. This optimized solution promises maximum security for multi-site network management and monitoring.

R&S® LANCOM Limited Lifetime Warranty (LLW)

This enterprise switch is reliably covered ex factory by a Limited Lifetime Warranty. Regardless of the switch's operating time, the replacement service is valid until the End of Life status of the device (max. 10 years). For perfect complement: Ensure minimal downtime in the event of a hardware defect with next-business-day delivery of a replacement device. We recommend R&S® NC NBD Replacement or in combination with guaranteed service times R&S® NC Support Direct Advanced 24/7 or 10/5.

R&S® LANCOM YS-7154CF

Security	
Secure Shell Protocol (SSH)	SSH for a secure remote configuration
Secure Sockets Layer (SSL)	SSL to encrypt HTTP connections; advanced security for browser-based configuration via web interface
IEEE 802.1X	IEEE 802.1X access control on all ports; RADIUS for authentication, authorization and accounting with e.g. MD5 hashing; guest VLAN; dynamic VLAN assignment
Private VLAN edge	Layer 2 isolation between clients in the same VLAN ("protected ports"); support multiple uplinks
Port security	Locking of MAC addresses to ports; limiting of the number of learned MAC addresses
IP source guard	Blocking access for illegal IP addresses on specific ports
Access-control-lists	Drop or rate limitation of connections based on source and destination MAC addresses, VLAN ID, IP address (IPv4/IPv6), protocol, port, DSCP/IP precedence, TCP/UDP source and destination ports, IEEE 802.1p priority, ICMP packets, IGMP packets, TCP flag. Support of 1023 ACEs (max. rules per list) per ACL and up to 2800 entries in total.
RADIUS/TACACS+	Authentication, authorization and accounting of configuration changes by RADIUS or TACACS+
Storm Control	Multicast/Broadcast/Unicast storm suppression
Isolated Group	Allows certain ports to be designated as protected. All other ports are non-isolated. Traffic between isolated group members is blocked. Traffic can only be sent from isolated group to non-isolated group.
DHCP Snooping	Protection against rogue DHCP servers on the network - Outgoing DHCP-server packets are only allowed on specific ports.
Dynamic ARP Inspection	Dynamic ARP Inspection to prevent man-in-the-middle attacks incl. proxy ARP
ARP Request Poisoning	Protection against ARP Request Poisoning (ARP Spoofing)
IPv6 First Hop	IPv6 First Hop Security by Snooping Guard, DHCPv6 Guard, Source Guard, Prefix Guard
Denial-of-Service	Protection against Denial-of-Service attacks to prevent the loss of important protocol functions
Performance	
Switching technology	Store and forward with latency less than 4 microseconds
MAC addresses	Support of max 131K MAC addresses
Throughput	Max. 2000 Gbps on the backplane
Maximum packet processing	1488 million packets per second (mpps) at 64-byte packets
VLAN	Port based and IEEE 802.1q tag based VLAN with up to 4,093 VLAN; Supports ingress and egress packet filter in port based VLAN
Jumbo frame support	Jumbo frame support with up to 12288 bytes
Packet Buffer	32 MB
6in4 Tunneling	Support of encapsulation of IPv6 traffic in IPv4 packets
Layer 3 features	
Number of L3 interfaces	max. 168k at IPv4, max. 100k at IPv6
Number of L3 multicast groups	16k
Routing (IPv4/IPv6)	Hardware based routing (IPv4/IPv6 combined) with a number of 16,000 possible routes
DHCP Server	DHCP Server per VLAN, max. 16 pools
VRRP	Virtual Router Redundancy Protocol
VRF	Virtual Routing and Forwarding (max. quantity 4k)
Dynamic routing (IPv4/IPv6)	dynamic routing by OSPFv2, OSPFv3 and BGP4
Protocol Independent Multicast	PIM-Sparse mode (PIM-SM) and PIM-Dense mode (PIM-DM)

R&S® LANCOM YS-7154CF

Layer 3 features	
Source specific multicast	Source specific multicast (SSM)for IP
Layer 2 switching	
Spanning Tree Protokoll (STP) / Rapid STP / Multiple STP / PVST	Standard Spanning Tree according to IEEE 802.1d with fast convergence support of IEEE 802.1w (RSTP); using Multiple Spanning Tree instances by default according to IEEE 802.1s (MSTP), PVST with up to 8 instances
Link Aggregation Control Protocol (LACP)	Support of 64 groups containing up to 32 ports each according to IEEE 802.1ax
Virtual port channel VPC	VPC (also known as MLAG) for details refer to VPC CLI manual and design guide
VLAN	Support for up to 4K VLANs simultaneously (out of 4093 VLAN Ids); matching due to port, IEEE 802.1q tagged VLANs, MAC addresses, IP subnet and Private VLAN Edge function ("protected ports")
Voice VLAN	Voice traffic is automatically assigned to a voice-specific VLAN and treated with appropriate levels of QoS
IGMP multicasts	IGMP v1, v2, v3 to limit bandwidth-intensive multicast traffic to ports with requesters; supports 1024 multicast groups; source-specific multicasting
IGMP querier	Support of multicast domains of snooping switches in the absence of a multicast router
IGMP Snooping	IGMP Snooping to identify multicast groups and prevent unnecessary traffic
IGMP proxy	IGMP proxy to pass IGMP messages through
MLD v1/v2	Multicast Listener Discovery - IPv6 multicast packets are transmitted to interested listeners only
Generic VLAN registration	VLAN registration with GVRP according to IEEE 802.1q for automatic delivery of VLANs in bridged domains
DHCP Relay Agent	Relay of DHCP broadcast request to different LANs
Supported DHCP options	all options listed in RFC2132
Stacking	
Stacking Option	Stacking by 4 QSFP28 100G Ports – via optional „R&S®LANCOM SFP-DAC100-1m“ or „R&S®LANCOM SFP-DAC100-3m“ or by using „LANCOM SFP-SR-LC100“ oder „R&S®LANCOM SFP-LR-LC100“ transceiver modules
Interfaces	
Ethernet	<ul style="list-style-type: none"> ▶ 48 SFP28 ports 1/10/25 Gbps ▶ 6 QSFP28 ports 40/100 Gbps (4 incl. stacking option) ▶ up to 54 concurrent ports
Console port	RJ45 configuration port for command line access
Out of band management port	Out of Band Management via Ethernet Port (SSH, HTTP/S, SCP, SFTP)
Management and monitoring	
Management	LANconfig, WEBconfig, R&S®LANCOM Management Cloud, Industry Standard CLI
Command Line Interface (CLI)	Configuration and status display from the command line with console application and direct connection to console port, via Telnet or SSH
Monitoring	LANmonitor, R&S®LANCOM Management Cloud
Remote Monitoring	Integrated RMON software agent supports 4 RMON groups (history, statistics, alarms and events) for enhanced traffic management, monitoring and analysis
Port Mirroring	Traffic can be mirrored from on port to another for investigation with network analyzer or RMON probe. Up to 51 ports can be mirrored to a single mirror port. Single sessions can be selected
Security	Access rights (read/write) can be set up separately, access control list
SNMP	SNMP management via SNMPv1, v2c or v3 with support of traps. User-based security model for SNMPv3 (USM)
Diagnosis	Diagnosis from the switch with PING and cable diagnosis

R&S® LANCOM YS-7154CF

Management and monitoring	
Firmware update	<ul style="list-style-type: none"> ▶ Update via WEBconfig and browser (HTTP/HTTPS) ▶ Update via TFTP, SCP, and LANconfig ▶ Update via R&S® LANCOM Management Cloud ▶ Dual firmware image to update during operation
Secure Copy	Securely import and export files
DHCP client	Automatic assignment of the management IP address by DHCP
SNTP	Automatic time settings with Simple Network Time Protocol (SNTP)
s-flow v5	Standard for monitoring of high-speed-networks. Visualization of network use, accounting an analysis to protect your network against dangers
Hardware	
Processor (CPU)	Intel Denverton4-Core with 1.6GHz
Memory	8GB DDR4
Storage	32GB SSD
Weight	19.18 lbs (8.7 kg)
Power supply	Two bays for swappable power supply units (100 – 240 V, 50 – 60 Hz)
Environment	Temperature range 0 – 40° C; humidity 10 – 90%; non-condensing
Housing	Robust metal housing, 19" 1U (440 x 43.8 x 440 mm > W x H x D) with removable mounting brackets, network connectors on the front
Fans	5 (swappable—replace defective fans within 48 hours to protect device from possible damage / time required for replacement approx. 2 min) Exchange fan "R&S® LANCOM SFAN-YS7" optionally available
Power consumption (max., incl. optical transceiver modules)	220 W
Power consumption (idle)	90 W
Acoustic noise (typ)	65 dBA
Heat power (max)	750 BTU/h
Software	
LCOS version	based on LCOS SX 5.30
Lifecycle Management	After discontinuation (End of Sale), the device is subject to the R&S® NC Lifecycle Management. Details can be found at: Link
IT Security made in Germany	The development and quality assurance take place in Germany in accordance with high security standards. The „IT Security made in Germany“ quality label of the German IT Security Association attests to the level of security achieved.
Declarations of conformity*	
Europe/EFTA	CE
North America	FCC/IC
Australia / New Zealand	ACMA
*) Note	The full text of the specific Declaration of Conformity is available here
Supported IEEE standards	
IEEE 802.1AB	Link Layer Discovery Protocol (LLDP)

R&S® LANCOM YS-7154CF

Supported IEEE standards	
IEEE 802.1AB	LLDP-MED
IEEE 802.1ad	Q-in-Q tagging
IEEE 802.1ak	MRP and MVRP - Multiple Registration Protocol and Multiple VLAN Registration Protocol
IEEE 802.1d	MAC Bridging
IEEE 802.1d	Spanning Tree
IEEE 802.1p	Class of Service
IEEE 802.1q	VLAN
IEEE 802.1s	Multiple Spanning Tree Protocol (MSTP)
IEEE 802.1w	Rapid Spanning Tree Protocol (RSTP)
IEEE 802.1X	Port Based Network Access Control
IEEE 802.3	10Base-T Ethernet
IEEE 802.3ab	1000Base-TX Ethernet
IEEE 802.1ax, incl. 802.3ad	Link Aggregation Control Protocol (LACP)
IEEE 802.3ae	10 Gigabit Ethernet over fiber
IEEE 802.3bz	2.5GBASE-T Ethernet
IEEE 802.3bj	25GBASE-X Ethernet
IEEE 802.3ba, 40G	40GBASE-X Ethernet
IEEE 802.3ba, 100G	100GBASE-X Ethernet
IEEE 802.3u	100Base-T Ethernet
IEEE 802.3x	Flow Control
IEEE 802.3z	1000Base-X Ethernet
IEEE 802.3ac	VLAN tagging
IEEE 802.3bj-CL91	Forward Error Correction (FEC)
IEEE 802.1ak	Multiple Registration Protocol (MRP)
IEEE 802.1as	Timing and Synchronization for Time-Sensitive LANs
IEEE 802.1Qat	Multiple Stream Reservation Protocol (MSRP)
IEEE 802.1Qav	Forwarding and Queuing Enhancements for Time-Sensitive Streams
IEEE 802.1Qbb	Priority-based Flow control
IEEE 802.1v	Protocol-based VLANs
Supported RFC standards	
RFC 854	Telnet Protocol Specification
RFC 1213	MIB II
RFC 1493	Bridge MIB
RFC 1534	Interoperation between DHCP and BootP
RFC 2021	Remote Network Monitoring MIB v2 (RMONv2)
RFC 2233	Interface MIB

R&S® LANCOM YS-7154CF

Supported RFC standards	
RFC 2453	Routing Information Protocol - RIPv2
RFC 2460	Internet Protocol Version 6 (IPv6)
RFC 2613	SMON MIB
RFC 2618	RADIUS Authentication Client MIB
RFC 2674	IEEE 802.1p and IEEE 802.1q Bridge MIB
RFC 2737	Entity MIB v2
RFC 2818	Hypertext Transfer Protocol Secure (HTTPS)
RFC 2819	Remote Network Monitoring MIB (RMON)
RFC 2863	Interface Group MIB using SMIv2
RFC 2933	IGMP MIB
RFC 3273	RMON Groups 1,2,3 and 9
RFC 3414	User based Security Model for SNMPv3
RFC 3415	View based Access Control Model for SNMP
RFC 3587	IPv6 Global Unicast Address Format
RFC 3636	IEEE 802.3 MAU MIB
RFC 3973	Protocol Independent Multicast -Dense mode (PIM-DM) (supports both IPv4 and IPv6)
RFC 4251	The Secure Shell Protocol Architecture (SSH)
RFC 4291	IP Version 6 Addressing Architecture
RFC 4443	Internet Control Message Protocol (ICMPv6)
RFC 4541	IGMP Snooping and MLD Snooping
RFC 4541	IGMP- and MLD-Snooping
RFC 4601	Protocol Independent Multicast -Sparse mode (PIM-SM) (supports both IPv4 and IPv6)
RFC 5171	Unidirectional Link Detection Protocol (UDLD)
RFC 5519	Multicast Group Membership Discovery MIB
Scope of delivery	
Manual	Hardware Quick Reference (DE/EN), Installation Guide (DE/EN)
Cable	Serial configuration cable, 1.5m
Cable	2 IEC power cord
Power supply	2 hot-swappable power supplies
Fan units	5 hot-swappable fan units
19" rack equipment	<ul style="list-style-type: none"> ▶ Two 19" brackets for rack mounting ▶ Two 19" switch slide-in rails
Support	
Warranty extension	R&S®LANCOM Limited Lifetime Warranty – replacement service up to the End of Life status of the device (maximum 10 years). Find details here . The service and support conditions valid as of July 01, 2026, available at rs-nc.rohde-schwarz.com/fileadmin/pdf/LCS/ServiceSupportConditions/Rohde-Schwarz-Networks-and-Cybersecurity-GmbH-Service-and-Support-Conditions-20260701.pdf , apply.

R&S® LANCOM YS-7154CF

Support	
Security updates	Up to the End of Life date of the device (see Link), can be extended by purchasing R&S®NC Support products
Software updates	Regular free updates including new features as part of the R&S®NC Lifecycle Management (Link)
Information on the EU Data Act	For details on product data and data on connected services, please refer to: Link
Manufacturer support	Available with R&S®NC products such as Support Access (for R&S®NC Community Partners only), Direct, or Premium
R&S®NC Support Direct 24/7 Advanced XXL	Direct, prioritized 10/5 manufacturer support incl. 24/7 emergency hotline and security updates for the device, NBD advance replacement with delivery of the device on the next business day (24/7/NBD), guaranteed first response times (SLA) of max. 30 minutes for reporting massive operational disruptions by telephone (priority 1) and max. 4 hours for all other concerns (priority 2), term-based for 1, 3, or 5 years (item no. 10797, 10798 or 10799)
R&S®NC Support Direct 24/7 XXL	Direct, prioritized 10/5 manufacturer support incl. 24/7 emergency hotline and security updates for the device, guaranteed first response times (SLA) of max. 30 minutes for reporting massive operational disruptions by telephone (priority 1) and max. 4 hours for all other concerns (priority 2), term-based for 1, 3, or 5 years (item no. 10791, 10792 or 10793)
R&S®NC Support Direct Advanced 10/5 XXL	Direct, prioritized 10/5 manufacturer support and security updates for the device, NBD advance replacement with delivery of the device on the next business day (10/5/NBD), guaranteed first response times (SLA) of max. 2 hours for reporting massive operational disruptions by telephone (priority 1) and max. 4 hours for all other concerns (priority 2), term-based for 1, 3, or 5 years (item no. 10794, 10795 or 10796)
R&S®NC Support Direct 10/5 XXL	Direct, prioritized 10/5 manufacturer support and security updates for the device, guaranteed first response times (SLA) of max. 2 hours for reporting massive operational disruptions by telephone (priority 1) and max. 4 hours for all other concerns (priority 2), term-based for 1, 3, or 5 years (item no. 10788, 10789 or 10790)
R&S®NC NBD Replacement XXL	Addition of the R&S®LANCOM Limited Lifetime Warranty with NBD advance replacement with delivery of the device on the next business day in case of hardware defect, item no.61324
R&S®LANCOM Management Cloud	
R&S®LANCOM Management Cloud	R&S®LANCOM LMC-D-1Y License (1 Year), enables the management of one category D device for one year via the R&S®LANCOM Management Cloud, item no. 50109
R&S®LANCOM Management Cloud	R&S®LANCOM LMC-D-3Y License (3 Years), enables the management of one category D device for three years via the R&S®LANCOM Management Cloud, item no. 50110
R&S®LANCOM Management Cloud	R&S®LANCOM LMC-D-5Y License (5 Years), enables the management of one category D device for five years via the R&S®LANCOM Management Cloud, item no. 50111
Accessories*	
1000Base-SX SFP transceiver module	R&S®LANCOM SFP-SX-LC1, item no. 61556
1000Base-SX SFP transceiver module	R&S®LANCOM SFP-SX2-LC1, item no. 60183
1000Base-LX SFP transceiver module	R&S®LANCOM SFP-LX-LC1, item no. 61557
10GBase-SX SFP transceiver module	R&S®LANCOM SFP-SX-LC10, item no. 61485
10GBase-LX SFP transceiver module	R&S®LANCOM SFP-LX-LC10, item no. 61497
10GBase-LX SFP transceiver module	R&S®LANCOM SFP-LR40-LC10, item no. 60182
10GBase-LX SFP BiDi transceiver module	R&S®LANCOM SFP-BiDi1310-LC10, item no. 60202
10G multi gigabit Ethernet copper module	R&S®LANCOM SFP-CO10-MG, Art.-Nr.: 60170
25GBase-SX SFP transceiver module	R&S®LANCOM SFP-SR-LC25, Art.-Nr.: 60171
25GBase-LX SFP transceiver module	R&S®LANCOM SFP-LR-LC25, Art.-Nr.: 60172
40GBase-SX SFP transceiver module	R&S®LANCOM SFP-SR-MPO40, Art.-Nr.: 60173

R&S® LANCOM YS-7154CF

Accessories*	
40GBase-LX SFP transceiver module	R&S® LANCOM SFP-LR-LC40, Art.-Nr.: 60174
100GBase-LR4 SFP transceiver module	R&S® LANCOM SFP-LR-LC100, Art.-Nr.: 60205
100GBase-SR4 SFP transceiver module	R&S® LANCOM SFP-SR-MPO100, Art.-Nr.: 60206
10G Direct Attach Cable 1m	R&S® LANCOM SFP-DAC10-1m, Art.-Nr.: 61495
10G Direct Attach Cable 3m	R&S® LANCOM SFP-DAC10-3m, Art.-Nr.: 60175
40G Direct Attach Cable 1m	R&S® LANCOM SFP-DAC40-1m, Art.-Nr.: 60176
40G Direct Attach Cable 3m	R&S® LANCOM SFP-DAC40-3m, Art.-Nr.: 60177
25G Direct Attach Cable 1m	R&S® LANCOM SFP-DAC25-1m, Art.-Nr.: 60180
25G Direct Attach Cable 3m	R&S® LANCOM SFP-DAC25-3m, Art.-Nr.: 60181
100G Direct Attach Cable 1m	R&S® LANCOM SFP-DAC100-1m, Art.-Nr.: 60203
100G Direct Attach Cable 3m	R&S® LANCOM SFP-DAC100-3m, Art.-Nr.: 60204
Power supply (swappable)	R&S® LANCOM SPSU-400-F2B or R&S® LANCOM SPSU-400-B2F, item no. 61922 , 61923
Fan (swappable)	R&S® LANCOM SFAN-YS7-F2B oder R&S® LANCOM SFAN-YS7-B2F, item no. 61918 , 61919
IEC power cord US, AU, UK, CH	R&S® LANCOM Power Cord for US, AU, UK, CH available on request
*) Note	Support for third-party accessories (SFP and DAC) is excluded and cannot be granted
Item number(s)	
R&S® LANCOM YS-7154CF-F2B	61907
R&S® LANCOM YS-7154CF-B2F	61908



Rohde & Schwarz Networks and Cybersecurity GmbH
 Adenauerstr. 20/B2
 52146 Wuerselen | Germany
info.rs-nc@rohde-schwarz.com | www.rohde-schwarz.com/networks-and-cybersecurity

R&S and Rohde & Schwarz are trademarks of Rohde & Schwarz GmbH & Co. KG, registered or used, among others, in Germany, the EU, the USA, China, and other countries. Other names or designations used may be registered trademarks of different companies or owners. This document contains forward-looking statements regarding products and product features. The publisher reserves the right to change these at any time without stating reasons. No liability is accepted for technical inaccuracies or omissions. 06/2026

ROHDE & SCHWARZ
 Make ideas real

