

LANCOM
SYSTEMS

LANCOM
SYSTEMS

NETWORKS & CYBERSECURITY

LANCOM Systems GmbH

Adenauerstr. 20/B2
52146 Wuersele | Germany
info@lancom.de | lancom-systems.com

Rohde & Schwarz Cybersecurity GmbH

Mühldorfstraße 15
81671 Munich | Germany
cybersecurity@rohde-schwarz.com
rohde-schwarz.com/cybersecurity

LANCOM, LANCOM Systems, LCOS, LANcommunity, LANCOM Service LANcare, LANCOM Active Radio Control, and AirLancer are registered trademarks. All other names or descriptions used may be trademarks or registered trademarks of their owners. This document contains statements relating to future products and their attributes. LANCOM Systems reserves the right to change these without notice. No liability for technical errors and / or omissions.

Data without an accuracy specification is non-binding. Subject to change.
© 04/2026

Product Overview 2026



ROHDE & SCHWARZ

Make ideas real



ROHDE & SCHWARZ

Make ideas real





Trusted network solutions

LANCOM Systems, a wholly owned subsidiary of Rohde & Schwarz, is a leading European manufacturer of secure, reliable and future-proof network and security solutions (WAN, LAN, Wi-Fi, firewalls, as well as Remote & Mobile Access) for the public and private sector. The company combines hardware business with virtual network components and Cloud-based software-defined networking (SDN). The development and quality assurance of LANCOM Systems' solutions take place in Germany in accordance with high security standards. The „IT Security made in Germany“ quality label of the German IT Security Association, as well as certifications from the Federal Office for Information Security (BSI), attest to the level of security achieved.

Rohde & Schwarz, with its business divisions Test & Measurement, Technology Systems, and Networks & Cybersecurity, is committed to a safer and more connected world. For 90 years, the global technology group has been setting new standards with the development of cutting-edge technologies. The company's leading products and solutions enable customers from industry, authorities, and governments to achieve technological independence and digital sovereignty. The owner-managed company headquartered in Munich acts independently, with a long-term and sustainable focus.

Table of contents

IT Security Ecosystem & Built-in Security	04
LANCOM Management Cloud	08
Routers & Gateways	12
Secure SD-WAN (VoIP) Gateways (with Multi-WAN)	14
Secure SD-WAN Central Site Gateways & vRouter	19
Industrial & Outdoor Secure SD-WAN Gateways	20
Access Routers & Routers Accessories	20
Remote & Mobile Access (LTA Client)	22
LANCOM R&S®Unified Firewalls	
Desktop, Rack & Virtual Unified Firewalls	24
Unified Threat Management Features	26
Management Tools, Licensing Model & Accessories	28
Switches	
Overview SME- & Enterprise-Class Switches	30
Enterprise-Class Core Switch	33
Enterprise-Class Aggregation & Access Switches	34
SME-Class Access & Unmanaged Switches	38
Industrial-Class Access Switches	41
Wireless LAN	
Wi-Fi 7 Indoor Access Points	42
Wi-Fi 6 Indoor Access Points	45
Outdoor Access Points	46
WLAN Controllers & Wi-Fi Accessories	48
Software Options	50
Service & Support (Services & LANcare)	52
Training (LANacademy)	55
<hr/>	
R&S Cybersecurity	56
R&S®ComSec	57
R&S®Trusted Objects Manager	58
R&S®SITLine	60
R&S®Trusted Disk	62



A strong network for your security

Increasing cyberattacks, hybrid clouds, and compliance requirements call for more flexible IT security solutions. With the IT Security Ecosystem, we offer a strong alliance of specialized security professionals and European, cross-vendor components.

This reduces risks, prevents operational interruptions, and provides proven combined solutions for individual needs.

Combined solutions that work together

The IT Security Ecosystem integrates specialized solutions that harmonize with our portfolio and jointly pursue one goal: delivering powerful security solutions that cover a broader range of requirements.

- **We as curator:** analysis of market requirements and selection of suitable IT security specialists
- **IT Security Partners for specialized technologies:** e. g. Network Access Control (NAC), Security Information and Event Management (SIEM), or IT network redundancies
- **System house partners for implementation in customer projects:** bundled project experience for reliable implementation of cross-vendor solutions

Become part of the IT Security Ecosystem!

More information via QR code scan or at:
www.lancom-systems.com/company/it-security/lancom-it-security-ecosystem

Why is an IT Security Ecosystem worthwhile?



Benefits for IT Security Partners

- **Synergy effects:** Joint solutions that meet customer requirements for cybersecurity
- **Greater visibility:** Recommendation in network projects
- **Quality assurance:** Validation for defined application areas
- **Go-to-market support:** Joint marketing and trainings
- **Long-term:** Continuous further development of the ecosystem



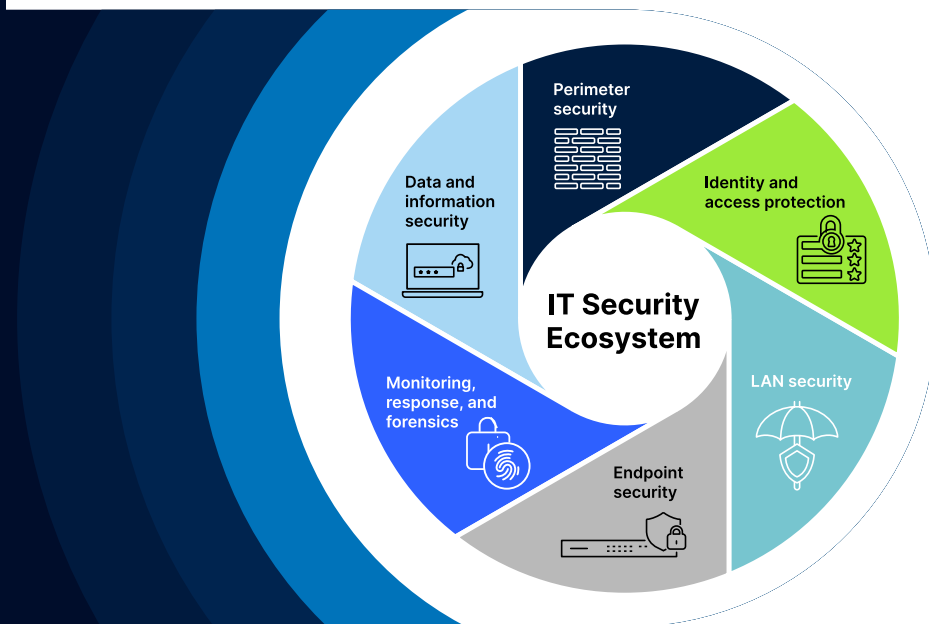
Benefits for end customers

- **Risk reduction:** Fewer cyber incidents, avoidance of downtime
- **Fast implementation:** Standardized integration for rapid rollouts
- **Higher efficiency:** Fewer errors, optimized processes
- **Comprehensive security:** Prevention, detection, and response
- **Clear roles:** We ensure functionality, partners implement



Benefits for system house partners

- **Sovereign solutions:** Projects with verified digital components
- **Preferred partner:** Positioning as implementation partner
- **Planning security:** Validated solutions with defined services
- **More visibility:** Co-branding with us and technology partners
- **Long-term relationships:** Validated architectures and clear responsibilities





IT security that is considered, built-in, and delivered as standard.

IT networks are essential building blocks in every organization – just like security is in our products.

That is why all network components are designed not only to operate reliably, but also to meet high security requirements.

Under the term “**Built-in Security**”, we summarize all security mechanisms that are already integrated in our routers, firewalls, switches, and access points, for example. Every component and every software release stands for maximum reliability and resilience – **Engineered in Germany** and free from hidden access paths.

In this way, we promote digital sovereignty in Europe.



What does Built-in Security mean?

Our products provide extensive security mechanisms. Built-in Security refers to the network security integrated at the factory for each product.

Example Built-in Security product features:

- Certification by the German Federal Office for Information Security (BSI) for verified trustworthiness
- High availability through redundancy and cellular backups
- R&S®PACE2 DPI engine for comprehensive data inspection
- IKEv2 / IPSec VPN support for secure site connectivity
- VS-NfD / EU RESTRICTED / NATO RESTRICTED
- Full disk encryption software

Your practical benefits

Our Built-in Security promise proves: security is not an add-on, but an integral part of every component. It signals at first glance that you can rely on a high level of security – tested, traceable, and long-lasting.

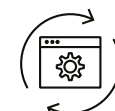
- **Secure operation:** Planned updates and high availability prevent outages and follow-up costs.
- **Transparency and control:** Proprietary operating systems and clear responsibilities create a verifiable security architecture.
- **Investment protection:** Long-term maintenance extends the service life.
- **Remain digitally sovereign:** Transparent development and control instead of external black boxes.



Engineered in Germany



BSI certification



Lifecycle management

LANCOM Management Cloud (LMC)

A secure and efficiently operated network is crucial for every company. The LANCOM Management Cloud combines security, automation, and central control: it supports adherence to regulatory requirements such as compliance and NIS2, reduces operational complexity and protects your entire network – from WAN and LAN to Wi-Fi, remote access, and security. This allows you to manage and operate your entire network infrastructure with an out-of-the-box solution – efficient, scalable, and future-proof.



75 % time savings for maximum productivity

- Managing multiple network projects via one central platform
- Fewer on-site deployments thanks to remote troubleshooting
- Zero-touch commissioning of entire sites
- Automated, predictable updates and rollouts
- Fewer errors through standardization
- Fast provisioning of new networks and services

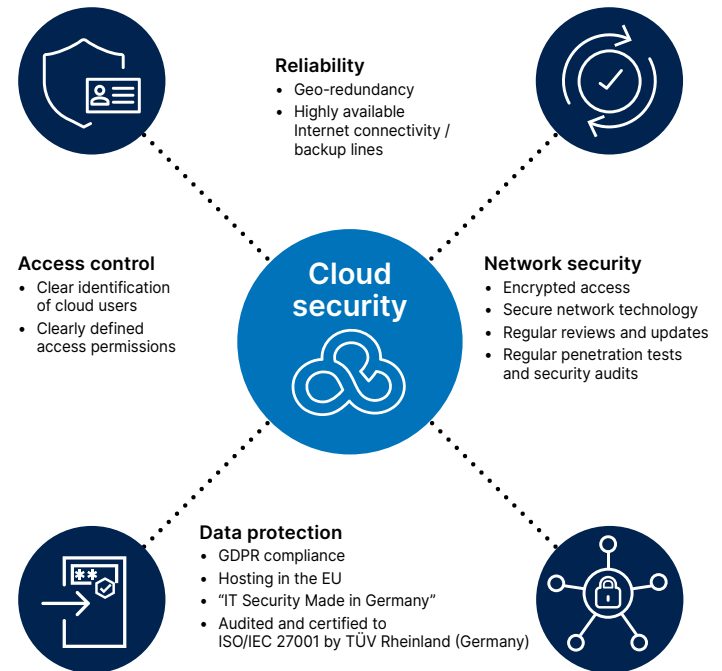
More about the LMC at:
www.lancom-systems.com/cloud

Digitally sovereign with the LMC

With the LANCOM Management Cloud, you benefit from strong, integrated security based on sovereign technology that ensures full data control and EU compliance.

The deep integration of all network components simplifies processes, maintenance and operation. Centralizing data enables comprehensive analyses and predictive diagnostics and forms the basis for future AI-supported network operations.

One of the safest and most trustworthy network management clouds on the market



We invest in IT security and quality!

Highlight features of the LMC

The LANCOM Management Cloud (LMC) bundles key functions for managing, monitoring, and operating network infrastructures. Benefit from the advantages:



Everything in view: Monitoring tailored to your requirements

LMC monitoring is continuously expanded and enhanced – with additional telemetry, log, and status data as well as growing analysis and evaluation options. The preconfigured “LMC dashboards” offer a quick start and cover central monitoring functions by topic. “My dashboards” adds a flexibly configurable overview in which monitoring parameters can be combined, prioritized, and analyzed on a project-specific basis. The option to connect via API enables seamless further processing of monitoring data in existing IT and operations platforms.

Network management made easy



→ Zero-touch commissioning

Entire sites can be commissioned centrally via the LMC – without time- and cost-intensive on-site deployments.



→ Advance planning of config rollouts and firmware updates

Rollouts and updates can be scheduled in advance and executed automatically within defined maintenance windows. Progress reports and warning messages ensure full transparency.



→ Wi-Fi optimization in seconds

LANCOM Active Radio Control 2.0 (ARC 2.0) reduces the costs for Wi-Fi setup and optimization by up to 99 %. The self-learning automation solution optimizes installations based on real usage data, reduces administrative effort, and improves the Wi-Fi user experience.

More at: www.lancom-systems.com/arc20

Securing business processes, minimizing costs



→ Full transparency for your device lifecycle

The “End of Sale” and “End of Life” status of your devices is clearly visible in the LMC. Filters and automatic notifications enable modernization measures to be planned in good time.



→ Secure administrator management via identity provider

Direct login via the identity provider enables centralized access management, simplifies secure onboarding / offboarding, and supports compliance with NIS2 requirements.



→ Dynamic energy-saving solution

LANCOM Active Power Control (APC) provides transparency regarding the power consumption of your devices, offers savings potential via “LANCOM Sustainability Mode”, and provides monthly and annual reports of central consumption metrics.



→ Flexible licensing models

The LMC offers flexible license and cost management. Device licenses can be purchased with different terms (1, 3, or 5 years) for clear upfront calculation. Alternatively, usage-based monthly billing via an SPLA contract is possible.



Stay up to date!

Register for the LMC Newsflash via your myLANCOM access or discover all new functions directly in the LMC news via QR code scan!



LANCOM Secure SD-WAN

Trusted SD-WAN from Germany.
For secure, scalable, and efficient networks.

Anyone who wants to connect company locations in a future-proof way and integrate modern cloud applications into their IT infrastructure today generally relies on a cloud-controlled SD-WAN. The advantages over manually managed wide area networks (WANs) quickly become clear:



Centralization, standardization, automation, high availability, as well as efficient resource and cost management in times of IT skills shortages

LANCOM Secure SD-WAN solutions not only offer the typical SD-WAN benefits such as time savings and optimized bandwidth usage, but in comparison to competitors they have **two key special features**:



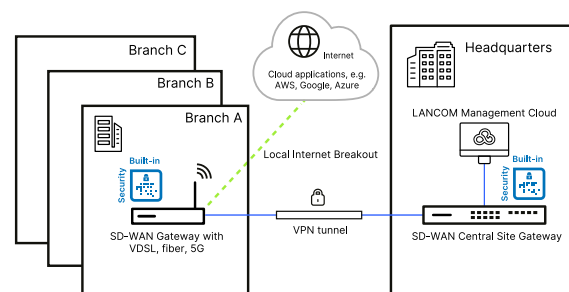
LANCOM Secure SD-WAN solutions are “**Engineered in Germany**” and strengthen compliance with GDPR and NIS2 requirements through BSI-tested hardware and software components – and thus the digital sovereignty of European companies.



With the **one-box solution**, you combine SD-WAN underlay (physical internet line level) and SD-WAN overlay (virtual network control, security, and optimization) in one single device. This reduces budget requirements and ensures clearer management during rollout and operation.

Whether as a managed service provider (MSP), carrier, company, or public institution: Switch to LANCOM Secure SD-WAN now and shape your network together with us! More at: www.lancom-systems.com/sd-wan

This is what LANCOM Secure SD-WAN can look like:



Ready for Secure SD-WAN

All LANCOM Secure SD-WAN gateways can be managed centrally via the cloud (LMC) – including secure network segmentation, automated provisioning, and intelligent path control (Dynamic Path Selection).



For extended protection, the global content and URL filters of the **LANCOM Security Essentials Option** provide additional security.

For transparent security and greater consumer protection

The IT Security Label identifies digital products for which manufacturers or service providers have assured compliance with security requirements of the German Federal Office for Information Security (BSI).

Label of the LANCOM 1800VA

More at: www.lancom-systems.com/bsi-it-security-label

Secure SD-WAN Gateways of the LANCOM 1800 blackline Series

Make your network more resource-efficient – with reliable day-to-day performance. This is made possible by a housing optimized for recycling, without coatings, adhesives or paint. Local production shortens transport routes, reduces CO₂ emissions and ensures greater delivery reliability. Thanks to the wide variety of interfaces and integrated security functions, the router series is ideal for branch rollouts – always matching the available local connections.



LANCOM SYSTEMS

POWER

CONSOLE

WAN

ETH

LAN

LAN

LAN

LAN

LAN

LAN

LAN

LAN

LAN

LAN

LAN

LAN

LAN

LAN

LAN

LAN

LAN

LAN

LAN

LAN

LAN

LAN

LAN

LAN

LANCOM 1800EFW-5G

- High-speed Internet via fiber (GPON and AON modules available separately) and Gigabit Ethernet for connecting external modems
- Integrated 5G modem incl. eSIM support
- Dual-band concurrent Wi-Fi 6 with up to 1,200 Mbps at 5 GHz and 575 Mbps at 2.4 GHz
- 5 VPN connections (IPSec & WireGuard, optional 25)

LANCOM 1800VA / 1800VA-4G / 1800VA-5G

- VDSL supervectoring modem (up to 300 Mbps)
- High-speed Internet via fiber (GPON and AON modules available separately) and Gigabit Ethernet for connecting external modems
- 5 VPN connections (IPSec & WireGuard, optional 25)
- **LANCOM 1800VA-4G** additionally with 4G modem for up to 300 Mbps LTE Advanced
- **LANCOM 1800VA-5G** additionally with 5G modem for 4G/5G primary operation or in Active/Active mode in parallel with other access types

LANCOM 1800VAW

- Like LANCOM 1800VA, additionally with Wi-Fi 6

LANCOM 1800VAW-4G

- Like LANCOM 1800VAW, additionally with 4G modem



Sustainability by design, for future-proof connections.

70% 

of the housing is made of post-consumer recycled material (PCR)

80% 

savings on paper documentation*

83% 

Higher airflow volume cooling and therefore quieter fan noise*

More at: www.lancom-systems.com/blackline

* compared to the classic LANCOM CPE housing

LANCOM 1803VA / 1803VA-4G / 1803VA-5G

- Like LANCOM 1800VA, additionally with professional secure telephony functions (VCM & SBC)
- Continued operation of existing ISDN and analog components via 2x ISDN S0 (NT) for multi-device and PBX configuration and 2x analog (internal) / fax
- **LANCOM 1803VA-4G** additionally with 4G modem
- **LANCOM 1803VA-5G** additionally with 5G modem

LANCOM 1803VAW

- Like LANCOM 1800VA, additionally with Wi-Fi 6

LANCOM 1803VAW-5G

- Like LANCOM 1803VAW, additionally with 5G modem incl. eSIM support



Secure SD-WAN Gateways of the 1800EF Series

As a small or medium-sized business, is your focus on a reliable fiber-optic network with secure connectivity for branches, employees, or service providers? With routers in the classic CPE housing, you rely on high-speed broadband Internet for Secure SD-WAN.

LANCOM 1800EF

- High-speed internet via fiber (GPON and AON modules available separately) and Gigabit Ethernet for connecting external modems
- 5 VPN connections (IPSec & WireGuard, optional 25)

LANCOM 1800EF-4G

- Like LANCOM 1800EF, additionally with a 4G modem for up to 300 Mbps LTE Advanced for intelligent backup scenarios and increased failover reliability

LANCOM 1800EF-5G

- Like LANCOM 1800EF, additionally with a 5G modem for low latency and high bandwidth in real-time applications

LANCOM 1800EFW

- Like LANCOM 1800EF, additionally with dual-band concurrent Wi-Fi 6 with up to 1,200 Mbps at 5 GHz and up to 575 Mbps at 2.4 GHz



Find your ideal router!

→ AI chatbot:

Get answers to your questions about routers and gateways:

www.lancom-systems.com/chatbot

→ Matchmaker:

Find the right router in just a few clicks:

www.lancom-systems.com/router-matchmaker

Post-quantum VPN security

Protect today what must not be decrypted tomorrow.

Quantum computers are developing rapidly, and with them grows a risk that is often addressed too late: encrypted data transmitted today can be stored and decrypted later (“**store now, decrypt later**”) – especially critical for information that must remain protected long-term. VPN remains indispensable for site-to-site connectivity and remote access. The key is to make it more quantum-resistant now.

Our solution: PQ-PSKs in IKEv2

All LANCOM routers support post-quantum preshared keys (PQ-PSKs) since firmware LCOS 10.90. The additionally pre-shared keys harden IKEv2 handshakes in a hybrid manner, also against quantum-related risks. Further quantum-resistant methods are already under development.

Your benefits

- Greater future-proofing for confidential data
- Easy integration into existing IKEv2 VPN setups
- More robust against attacks and manipulation attempts



The smart cellular solution directly in the router

With integrated eSIM technology, selected LANCOM Secure SD-WAN gateways connect immediately to the mobile network – without a physical SIM card. Mobile contracts and profiles are installed, switched, and managed via software.

Your benefits

- No SIM card swapping and no risk of lost SIM cards
- Fast rollouts with cellular routers ready for immediate use
- No costly on-site deployments
- Flexible tariff changes and easy management



Deepen your knowledge!

Would you like to learn both functions directly in practice? In our publications, you will find further documentation on setup – clearly structured and available for free download at any time.

More at: www.lancom-systems.com/publications



Secure SD-WAN Gateways with Multi-WAN

Large, multi-site network infrastructures require efficient use of all available WAN connections in order to operate data-intensive applications reliably and with high performance.

LANCOM 1936VAG / 1926VAG-4G / 1936VAG-5G

- Load Balancing via 2x VDSL Supervectoring or 1x G.Fast, 1x Gigabit Ethernet, and 1x SFP/TP combo
- Telephony functions (VCM / SBC), and 2 ISDN (NT) plus 4 analog interfaces
- 25 VPN connections (IPSec & WireGuard, optional 100)
- **LANCOM 1926VAG-4G** additionally with Dual-SIM 4G modem
- **LANCOM 1936VAG-5G** additionally with Dual-SIM 5G modem incl. eSIM support



LANCOM 1930EF / 1930EF-5G

- 1x Gigabit Ethernet, and 1x SFP/TP combo
- Load Balancing and telephony functions
- 25 VPN connections (optional 100)
- **LANCOM 1930EF-5G** additionally with Dual-SIM 5G modem incl. eSIM support



BSI-certified network security with the accelerated security certification (BSZ)

The LANCOM 1930EF was certified by the German Federal Office for Information Security (BSI) under the BSZ testing procedure. The security certificate confirms the high level of protection and the pronounced resilience against attacks.

More at: www.lancom-systems.com/bsz



Secure SD-WAN Gateway with Multi-Gigabit WAN

LANCOM 2100EF

- Multi-Gigabit high-speed Internet via fiber with 2x 10G SFP+
- 4x 2.5 Gigabit Ethernet for connecting network components with high performance requirements
- Integrated telephony functions (VCM / SBC)
- 25 VPN connections (IPSec & WireGuard, optional 100)



Secure SD-WAN Central Site Gateways

Large multi-service IP networks require performance, reliability, and consistently high security at the central site. The ISG series forms the secure core for this – incl. integrated security mechanisms such as firewall and redundancy functions, as well as segmentation.

LANCOM ISG-8000

- 2x 10G SFP+ and 8x Gigabit Ethernet
- 250 VPN connections (IPSec & WireGuard, optional 3,000)
- Network virtualization with up to 256 networks (ARF)



LANCOM ISG-5000

- 2x 10G SFP+, and 6x Gigabit Ethernet
- 100 VPN connections (IPSec & WireGuard, optional 1,000)
- Network virtualization with up to 256 networks (ARF)



Virtualized performance for scalable Secure SD-WANs

Whether as a virtual branch router (vCPE), a central gateway (vGateway), or a WLAN controller (vWLC): the software-based LANCOM vRouter runs on VMware ESXi, AWS, Microsoft Hyper-V, or Azure, and provides flexibility in network size and performance requirements – while ensuring consistent protection for your site and cloud infrastructures.

License variants can be found at: www.lancom-systems.com/vrouter

vRouter

Industrial & Outdoor Secure SD-WAN Gateways

Devices in a robust housing are the ideal solution for harsh environments – whether in industrial settings, outdoors, or at hard-to-reach locations.

LANCOM IAP-5G

- 5G modem for low latency and high bandwidth
- IP50 all-metal protective housing
- Reliable in adverse temperatures (-20°C to +50°C)
- 5 VPN connections (IPSec & WireGuard, optional 25)
- Power supply via PoE according to 802.3at or via power adapter



New

LANCOM OAP-5G

- 5G modem incl. eSIM support
- IP67 protective housing with complete dust-tightness and resistance to water jets (temperature range -20°C to +70°C)
- 5 VPN connections (IPSec & WireGuard, optional 25)
- Power supply via PoE according to 802.3at

Access Routers & Network Extensions

LANCOM 750-5G

- Operation as a freely positionable 5G network extension or as a stand-alone 5G router
- Connection to LANCOM router or switch
- Power supply via PoE according to 802.3af or via power adapter



LANCOM 730-4G+

- Operation as a 4G network extension or as backup with LTE Advanced up to 300 Mbps
- Power supply via PoE according to 802.3at or via power adapter



LANCOM 1650E

- Flexible connection of external modems via Gigabit Ethernet
- 3 VPN connections (IPSec & WireGuard)



Learn more about all products in the Routers & Secure SD-WAN section at: www.lancom-systems.com/products/routers-sd-wan

Routers Accessories

LANCOM CPE blackline Rack Mount (Plus)

- Mounting device for LANCOM gateways in blackline housing in 19" cabinets
- Plus variant additionally with front-facing connections



LANCOM Rack Mount (Plus)

- Mounting device for LANCOM devices in classic CPE housing in 19" cabinets
- Plus variant additionally with front-facing connections



LANCOM Wall Mount (White / Rail)

- Stable wall mount for LANCOM devices in classic CPE housing
- Theft-proof mounting using padlock
- Available in classic and white color variants
- Rail variant for mounting on DIN rails



AirLancer I-360D-5G

- Indoor 4G / 5G cellular antenna with 360° radiation pattern and 2x2 MIMO for higher data rates and better signal quality
- Covers all 4G and 5G bands from 700 to 3,800 MHz
- Ideal for connection to LANCOM 4G indoor cellular routers



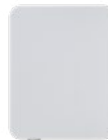
AirLancer O-360D-5G

- Like AirLancer I-360D-5G incl. mounting material for wall and mast installation outdoors



AirLancer O-360Q-5G

- Outdoor 5G cellular antenna with 360° radiation pattern and 4x4 MIMO for maximum 5G performance
- Ideal for connection to LANCOM 5G indoor cellular routers



Bidirectional fiber transceiver modules (FTTH)

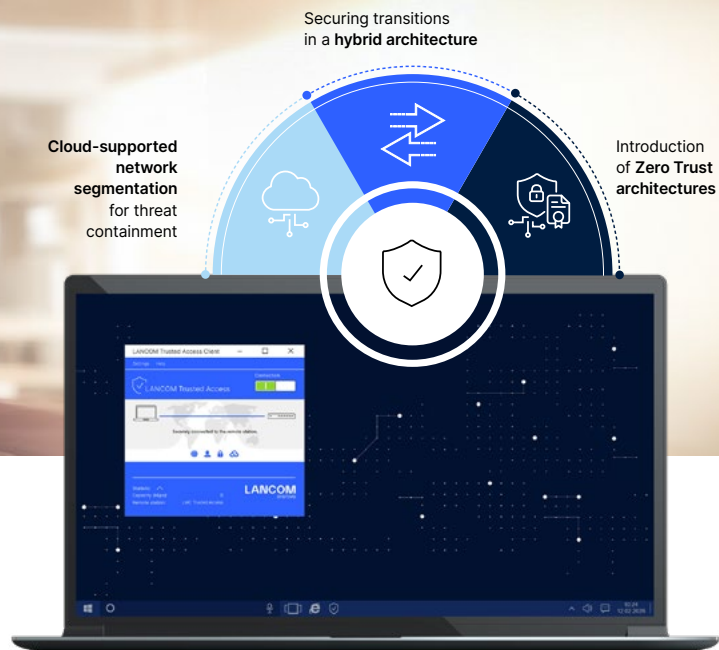
- LANCOM SFP-AON-1 for up to 1G on active fiber lines
- LANCOM SFP-AON-10 for up to 10G on active fiber lines
- LANCOM SFP-GPON-1 for up to 1G on passive fiber lines
- LANCOM SFP-XGSPON-1 for passive 10G fiber lines



More transceiver modules at: www.lancom-systems.com/transceiver-modules



From perimeter security to Zero Trust

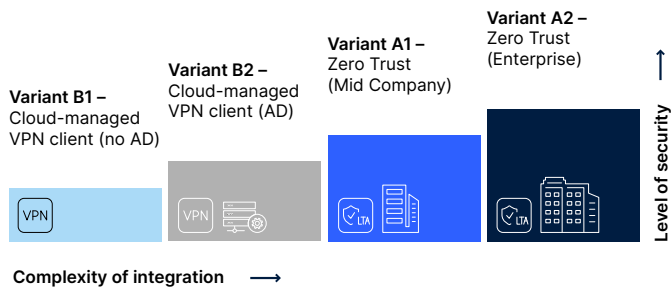


LANCOM Trusted Access

Modern remote access – simple, scalable, and secure!

LANCOM Trusted Access (LTA) is the highly scalable network access security solution for enterprise networks. It enables secure and reliable access to corporate resources for employees in the office, at home, or on the road, and thus protects modern hybrid work from anywhere, any time.

Discover the integration level of LANCOM Trusted Access that suits you – from a cloud-managed VPN client without Active Directory integration, through intermediate stages, up to full Zero Trust implementation with granular access controls!



More information about the LTA client can be found at: www.lancom-systems.com/products/remote-mobile-access/lancom-trusted-access-client

Watch the LTA video now!

100% digital sovereignty – 100% GDPR compliant!

Everything you need to implement a LANCOM Trusted Access system architecture:

- LANCOM Trusted Access Client (LTA client) as software on end devices
- Trusted Access controller (LANCOM Management Cloud)
- Trusted Access gateway (VPN-capable LANCOM router or firewall)

Onboarding with free tutorial access and trial version!

We look forward to supporting you in implementing LANCOM Trusted Access (LTA)! The onboarding program helps you integrate LTA seamlessly into your networks.

By answering the questionnaire, you determine your optimal LTA integration level. Afterwards, tailored tutorial videos and a 30-day trial version will be available to you!

More at: www.lancom-systems.com/ta-onboarding

Desktop Unified Firewalls

Small and medium-sized enterprises (SME) are increasingly becoming targets of cyberattacks – making trustworthy threat protection all the more important. Rely on multi-layered security “Engineered in Germany” from LANCOM R&S®Unified Firewalls with full VPN functionality and Unified Threat Management (UTM), manageable individually via a web interface or centrally via the LANCOM Management Cloud.

The **LANCOM R&S®UF-T60** features a rugged housing including DIN rail mounting for harsh industrial environments (temperature range –20 °C to +70 °C).



	UF-T60	UF-60	UF-160	UF-260
IDS /IPS throughput HTTPS (Mbps)	1,150	700	750	1,250
Firewall throughput TCP (Mbps)	3,700	3,500	3,550	4,450
VPN throughput IPSec (Mbps)	1,200	790	1,200	1,500
UTM throughput HTTPS (Mbps)	200	150	170	340

Virtual Unified Firewalls

vFirewall

Software-based security for any scale

LANCOM vFirewalls provide an equivalent level of security and a comprehensive feature set in cloud scenarios or classic networks of any size – just without additional hardware. Operation takes place in a virtualized environment based on a hypervisor such as VMware ESXi, Oracle VirtualBox, Microsoft Hyper-V, or KVM. The flexible licensing model allows your LANCOM vFirewall to grow easily with your requirements (license variants S, M, L, or XL).

	S	M	L	XL
Cores	1	2	4	16
RAM	4	8	16	64
Max. recommended users*	20	100	200	500
VLAN	16	32	64	256

* When all users are using all UTM functions simultaneously

Rack Unified Firewalls

For growing, distributed companies as well as educational institutions with high and uneven data volumes, the rack models of the LANCOM R&S®Unified Firewalls offer high performance, VPN capabilities, and holistic UTM security “Engineered in Germany”.

The **LANCOM R&S®UF-1060**, for example, achieves up to 100G interface performance and 10G UTM performance.



New

	UF-360	UF-560	UF-760	UF-1060
Optional expansion modules	1G ETH, 1G SFP, 10G SFP+	1G ETH, 1G SFP, 10G SFP+, 40G QSFP+	1G ETH, 1G SFP, 10G SFP+, 40G QSFP+	1G ETH, 1G SFP, 10G SFP+, 40G QSFP+, 100G QSFP28
IDS /IPS throughput HTTPS (Mbps)	1,400	4,700	13,000	20,000
Firewall throughput TCP (Mbps)	11,600	20,000	49,830	100,000
VPN throughput IPSec (Mbps)	2,200	9,000	19,700	40,000
UTM throughput HTTPS (Mbps)	420	1,500	3,400	12,000



Find the right firewall!

→ **AI chatbot:** Get advice on tailored product selection for increased network security:
www.lancom-systems.com/chatbot

→ **Matchmaker:** Answer a few questions and receive an immediate Unified Firewall recommendation:
www.lancom-systems.com/firewall-matchmaker

Unified Threat Management Features

Unified Threat Management (UTM) combines proven and modern protection mechanisms into a holistic security concept. Classic functions such as Anti-Virus are complemented by modern approaches like container management directly on the firewalls. Through the interaction of security, compliance, and usability, UTM reliably protects your network. This sustainably strengthens your security level, enables early threat detection, and protects sensitive company data across locations.

Top 5 UTM highlights



Application and content control with Application Management and the R&S®PACE 2 Deep Packet Inspection (DPI) engine



Database-based protection against known threats with Intrusion Detection and Prevention Systems (IDS / IPS)



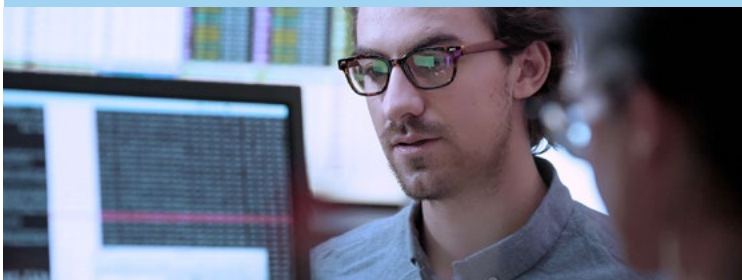
Preventive protection against unknown threats with cloud-based sandboxing and machine learning (Anti-Virus)



Protection against phishing attacks with DNS web filter and content filter as well as HTTP(S) proxy (Secure Web Gateway, SWG)



Access control via user-based rules and network segmentation (VLAN segmentation)



Secure edge computing for secure data processing at the network edge



Business processes continuously generate large volumes of data, for example from sensors, networked machines, or card readers. Unfiltered transmission to the cloud or data centers can increase latency, network load, and security risks.

Secure edge computing therefore shifts computing power and protection directly to the point where data is generated – the network edge. Local Desktop and Rack Unified Firewalls then not only secure the connection but also serve as a platform for isolated applications (**Docker containers**). This allows critical processes to run locally in real time with consistent security and data protection mechanisms.

The result: higher speed, greater data sovereignty, and new freedom for custom edge security concepts, for example through industry-specific security and analytics functions.

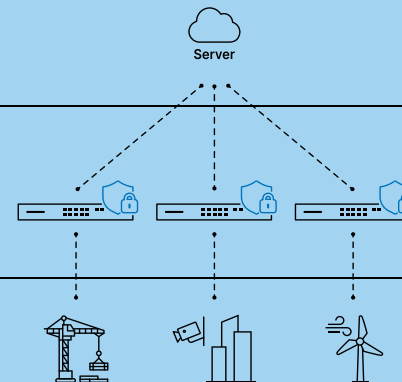
Cloud layer

data storage and central management



Edge layer

real-time data processing on secure edge computing platforms (Unified Firewalls)



Device layer

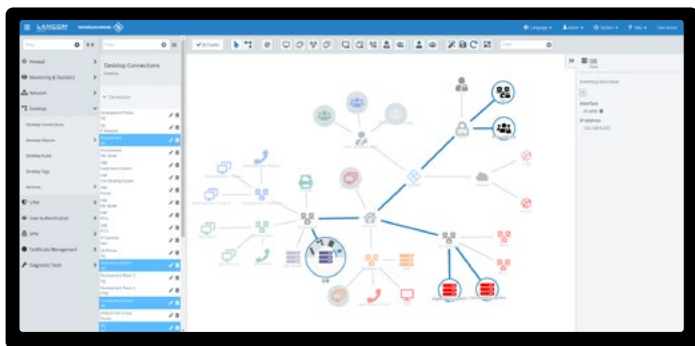
raw data from sensors and controllers

A Full License is required to use all UTM features. Additional firewall features for all license types can be found via QR code scan or at: www.lancom-systems.com/products/security/firewall-features

As of firmware version LCOS FX 11.2, Docker containers with SAG Full / Basic License can be run directly on the hardware appliances of the Unified Firewalls. More at: www.lancom-systems.com/solutions/network-security/secure-edge-computing

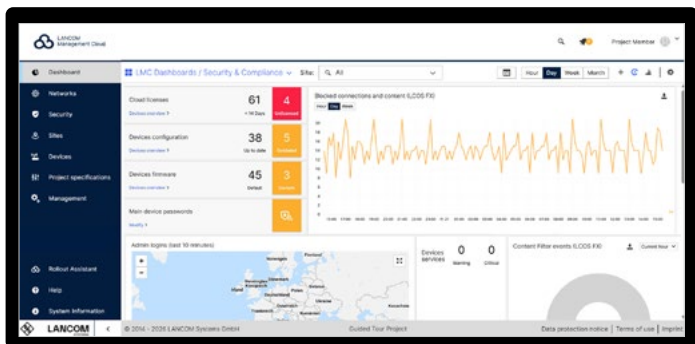
Management & Monitoring Tools

LANCOM R&S®Unified Firewalls and vFirewalls can be managed conveniently and efficiently – whether as individual appliances or as a complete, multi-site security infrastructure. Administrators maintain full visibility at all times, deploy policies quickly, and enforce security standards consistently.



Graphical web interface

- Browser-based management console for transparent, detailed configuration of individual firewalls including compliance and audit reports



LANCOM Management Cloud (LMC)

- Central management of all firewalls via one platform
- “One-Click Security” – creation of uniform security standards through global policies (policy-based management) and automated, simultaneous rollout to multiple firewalls at different locations
- Transparent event and alert functions for rapid incident response
- SIEM integration service for cloud-managed firewalls
- Integration of firewall licenses into Service Provider License Agreements (SPLA)

Firewall Licensing Model

An active license is required to operate LANCOM R&S®Unified Firewalls and vFirewalls. You can choose the functional scope (Basic or Full), container functionality (SAG), and license term (1, 3, or 5 years, or SPLA). In the myLANCOM firewall license portal, you can securely monitor, activate, and renew your firewall licenses in one central location.

LANCOM License UF Basic

Activates firewall functionality and provides firmware updates and manufacturer support (with a valid support contract, e.g. LANcare)

LANCOM License UF Full

Extends the Basic License with full UTM functionality including malware/spam protection, and content filtering with youth protection

LANCOM License UF SAG Basic

Extend the Basic or Full functionality with Secure Application Gateway (SAG) support for integrating customer-specific Docker containers, isolated from the operating system. For new firewalls, the SAG Full License can be tested free of charge for up to 30 days.

LANCOM License UF SAG Full

Firewall Accessories

LANCOM Firewall Extension Module

- Flexible port expansion for Unified Firewalls
- Available with various interfaces for high-speed fiber connectivity or as copper-based Ethernet ports (1G ETH, 1G SFP, 10G SFP+, or 40G QSFP+ with 2, 4, or 8 ports per module)



LANCOM Transceiver Modules

- Flexible use in firewalls with SFP ports
- For (bidirectional) fiber connectivity or as copper-based Ethernet ports
- Also available in bulk or as direct attach cables



LANCOM SPSU UF-760

- 300-watt hot-swappable power supply for increased availability of the LANCOM R&S®UF-760



LANCOM Firewall Rack Mount

- Sturdy mounting solution for LANCOM R&S®UF-60, UF-160, and UF-260 in 19" racks



For more information on all security products and compatible expansion and transceiver modules for your device, visit: www.lancom-systems.com/products/security

Switch Portfolio

The LANCOM switch portfolio covers almost every deployment scenario – from reliable entry-level solutions to high-performance platforms for demanding network infrastructures. Choosing the right device provides planning and investment security while also offering the flexibility to quickly expand your network in a future-proof way when required.

Our switches differ by class in terms of feature set, performance, and scalability. This allows you to find the right solution for every network requirement – from cost-efficient entry-level (SME) to highly scalable switch infrastructures for demanding enterprise networks.

	SME-Class Switches	Enterprise-Class Switches
Portfolio focus	Price- / efficiency-oriented	Performance- / feature-oriented for campus networks
Firmware & operation	Unified operating system, proprietary CLI and GUI	Unified operating system, CLI and GUI based on industry standards
Switching & Routing	Layer 2 and layer 3 lite functionality (DHCP and static routing)	Full layer 3 functionality (including OSPF and BGP)
Redundancy & High Availability	→ No stacking functionality → Primarily no redundant PSUs and fans (except XS-3550XUP and GS-3652XUP)	→ Extended redundancy and virtualization functions with stacking and VPC → Redundant PSUs and fans (hot-swappable)
Security / Access Control	Standard functions	RADIUS-assigned ACLs
Warranty	5-year replacement service	LANCOM Limited Lifetime Warranty until End of Life or max. 10 years
Access switch series	→ GS-2000 → GS-3000 → XS-3000	→ GS-4000 → XS-4000
Aggregation switch series	–	→ XS-5000 → XS-6000 → YS-7000 → CS-8000

Find the right switch!

→ **AI chatbot:** Simply ask which switch from the portfolio best fits your individual requirements!

www.lancom-systems.com/chatbot

→ **Series comparison:** Compare all switch series directly with each other to find the features you are looking for:

www.lancom-systems.com/switch-series-comparison

→ **Matchmaker:** Answer a few questions in the decision tree and immediately find the right access switch:

www.lancom-systems.com/switch-matchmaker

Discover the topic series for switching solutions!

From switching basics and network design recommendations to specific configuration guides, you will find bundled expertise on the efficient use of LANCOM access, aggregation / distribution, and core switches. Whether you are a beginner or an expert – here you will find the right information for your personal level of knowledge.

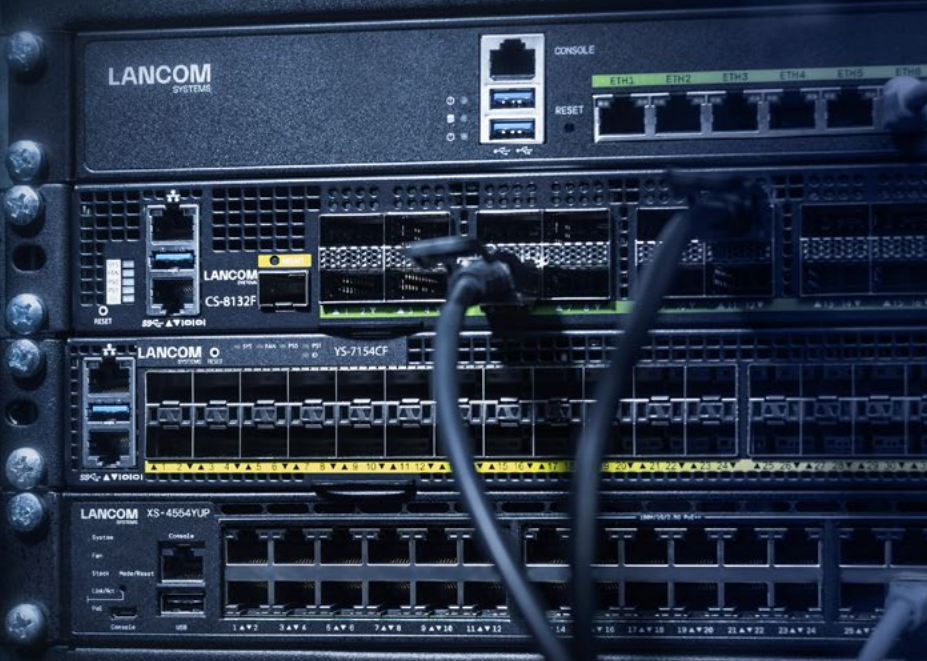
- Basics** Two-tier & three-tier switch architectures
- Basics** Switch security with IEEE 802.1X
- Design guide** Redundancy concepts for switch networks
- Setup guide** VPC configuration with LANCOM switches
- Setup guide** Stacking with LANCOM switches
- Setup guide** Configuration options XS-6128QF / XS-6228QF

Learn more at:
www.lancom-systems.com/products/switches/three-tier-switch-networks

Time to switch

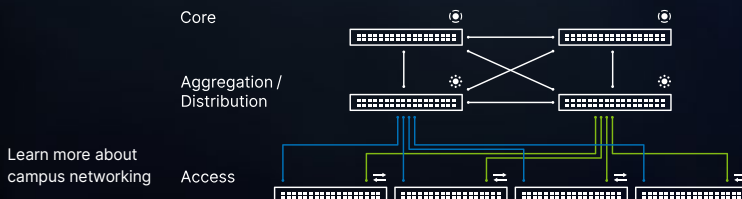
Three-tier switch networks. From access to core – 100% LANCOM.

The larger your network becomes, the sooner you should consider a hierarchical network design with more powerful switches in order to meet future growth and technology trends.



Three-tier design – fully based on LANCOM switches!

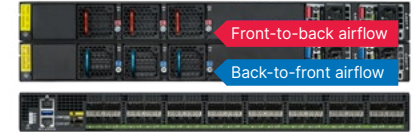
For large, distributed enterprises and campus networks, a LAN architecture with core, distribution, and access layers makes sense – for unified management and maximum investment protection from a single source.



Learn more about campus networking

Core Switch

As the central node for distributed campus area networks, the core switch provides enormous switching capacity. In addition to a selectable fan concept, intelligent switch redundancy concepts (VPC / MC-LAG) and the included Limited Lifetime Warranty (LLW) until End of Life ensure seamless availability and maximum network resilience.



LANCOM CS-8132F

- 32-port 100G fiber core switch with 100G QSFP28 industry-standard ports and up to 6.4 Tbps switching capacity
- Support for VPC or MC-LAG and ISSU to implement networks with 100 % uptime
- Full layer 3 functionality via VRRP, DHCP, static routing, and policy-based dynamic routing using OSPF v2/v3 and BGP4
- Two variants available with front-to-back (F2B) or back-to-front (B2F) airflow for optimal 19" rack cooling
- Incl. 2 redundant, hot-swappable PSUs and 3 redundant (n+1), hot-swappable fans for increased availability
- Incl. 2x 19" mounting brackets and 2x 19" telescopic rails (switch slide-in rails) for four-point mounting in 19" racks

LANCOM SFAN-CS8-F2B / SFAN-CS8-B2F

- Hot-swappable fan modules

LANCOM SPSU-750-F2B / SPSU-750-B2F

- Hot-swappable power supplies



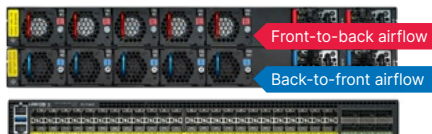
100 % uptime of the network

Reliability is one of the most important planning components for fail-safe switch networking. With the virtualization technology Virtual Port Channel (VPC), also known as MC-LAG (Multi-chassis Link Aggregation Group), two interconnected switches form a virtual unit. However, both switches remain independently manageable devices that can be restarted or updated individually.

VPC thus forms the basis for In-Service Software Upgrades (ISSU), e. g. firmware updates during operation. This means that 100 % network uptime, also known as zero downtime, can be achieved from core to access level with LANCOM switches!

Aggregation Switches

Aggregation switches form the central interface between the core and access layers. With high-performance fiber ports on downlink and uplink, as well as redundancy mechanisms such as VPC and stacking, they provide a reliable distribution layer for highly available networks – each including replacement service with their Limited Lifetime Warranty (LLW).



LANCOM YS-7154CF

- 54-port stackable 25G fiber aggregation switch for highly available campus networks or as a collapsed core in two-tier networks
- 48x 25G SFP28 and 6x 100G QSFP28 ports, thereof 4 FleX stacking ports
- Up to 3.6 Tbps switching capacity and full layer 3 functionality
- Network redundancy and 100 % uptime with VRRP, VPC / MC-LAG, and ISSU, or alternatively stacking for nearly 100 % uptime with uplink and stacking ports
- Selectable F2B or B2F airflow design for optimal cooling
- Incl. 2 redundant, hot-swappable PSUs and 5 redundant (n+1), hot-swappable fans for increased reliability
- Incl. 2x 19" mounting brackets and 2x 19" telescopic rails (switch slide-in rails)

LANCOM SFAN-YS7-F2B / SFAN-YS7-B2F

- Hot-swappable fan modules



LANCOM SPSU-400-F2B / SPSU-400-B2F

- Hot-swappable power supplies



New

LANCOM XS-6128QF / XS-6228QF

- 28-port stackable 10G fiber aggregation switch for medium-sized and large distributed networks, also usable as a collapsed core in two-tier networks
- 20x 10G SFP+ downlink ports, thereof 4 multi-Gigabit combo ports (SFP+ or 1G / 2.5G / 5G / 10G nBASE-T), 4x 25G SFP28 or 2x 40G QSFP+ FleX uplink ports, and 4x 50G SFP-DD FleX stacking ports
- Up to 1,000 Gbps switching capacity and full layer 3 functionality
- Network redundancy and 100 % uptime with VRRP, VPC / MC-LAG, and ISSU, or alternatively stacking with FleX uplink or stacking ports
- Incl. 2x 19" mounting brackets and 2x 19" telescopic rails (switch slide-in rails)
- LANCOM XS-6228QF additionally with out-of-band (OOB) management port

LANCOM SFAN-XS6 (Hot-swappable fan module)



LANCOM XS-5116QF

- 16-port stackable 10G fiber aggregation switch for medium-sized networks
- 14x 10G SFP+ downlink ports, thereof 2 multi-Gigabit combo ports (SFP+ or 1G / 2.5G / 5G / 10G), and 2x 40G QSFP+ uplink or stacking ports
- Up to 440 Gbps switching capacity and full layer 3 functionality
- Network redundancy with stacking
- Incl. 2x 19" mounting brackets and 2x 19" telescopic rails (switch slide-in rails)



LANCOM XS-5110F

- 10-port stackable 10G fiber aggregation switch for smaller networks
- 8x 10G SFP+ and 2x multi-Gigabit Ethernet ports (1G / 2.5G / 5G / 10G)
- Up to 200 Gbps switching capacity and full layer 3 functionality
- Network redundancy with stacking
- Incl. 2x 19" mounting brackets



Additional Switch Accessories

LANCOM SPSU-920

- 920-watt power supply as redundant power source for failover protection or PoE budget expansion (hot-swappable)
- Protection against power spikes, overvoltage, and overheating
- Compatible with XS-4554YUP, XS-4530YUP, GS-4554XUP, GS-4554XP, GS-4530XUP, GS-4530XP, XS-3550YUP, and GS-3652XUP



LANCOM SPSU-250

- 250-watt power supply for failover protection (hot-swappable)
- Protection against power spikes, overvoltage, and overheating
- Compatible with XS-6128QF, XS-5116QF, GS-4554X, and GS-4530X



LANCOM Switch Rack Mount L250

- L-shaped mounting bracket for rear stabilization of selected access switches (from 37 cm depth) in 19" racks
- Compatible with XS-3550YUP, GS-3652XUP, GS-3652XP, and GS-3252P



LANCOM Transceiver Modules

- Flexible use in switches with integrated SFP ports*
- For (bidirectional) fiber connectivity or as copper-based Ethernet ports



LANCOM Direct Attach Cable

- Practical alternative to individual transceiver modules



* Compatibility information can be found at: www.lancom-systems.com/transceiver-modules

Full Layer 3 Stackable Enterprise-Class Access Switches

With the stackable access switches of the XS- and GS-4500 series, you can reliably implement large, data-intensive LAN infrastructures and create the foundation for powerful Wi-Fi 7 and Wi-Fi 6 access points. At the access layer, these switch series offer the same advantages and functions known from aggregation switches – industry-standard CLI and ports, high availability thanks to redundant power supplies and fans, and a replacement service (LLW). All models include mounting brackets and telescopic rails for rack installation.

LANCOM XS-4554YUP



- 54-port stackable 10G PoE++ multi-Gigabit access switch
- 12x 10 and 36x 2.5 multi-Gigabit Ethernet ports as well as 4x 25G SFP28 and 2x 100G QSFP28 uplink or stacking ports
- Up to 1,020 Gbps switch capacity and full layer 3 functionality
- Network redundancy and 100 % uptime with to VRRP, VPC / MC-LAG, and ISSU or alternatively stacking for nearly 100 % uptime with uplink or stacking ports
- PoE++ according to IEEE 802.3bt PD Type 4 on all 48 Ethernet ports with up to 1,440 watts PoE budget as the basis for Wi-Fi 7 access points

LANCOM XS-4530YUP



- 30-port stackable 10G PoE++ multi-Gigabit access switch
- 12x 10 and 12x 2.5 multi-Gigabit Ethernet ports as well as 4x 25G SFP28 and 2x 100G QSFP28 uplink or stacking ports
- Up to 900 Gbps switch capacity and full layer 3 functionality
- Network redundancy and 100 % uptime with to VRRP, VPC / MC-LAG and ISSU or alternatively stacking for nearly 100 % uptime with uplink or stacking ports
- PoE++ according to IEEE 802.3bt PD Type 4 on all 24 Ethernet ports with up to 1,440 watts PoE budget as the basis for Wi-Fi 7 access points

Advantages of the Limited Lifetime Warranty (LLW)

- Replacement service until End of Life status (max. 10 years) and assurance of security updates until the End of Life status of the device
- Fast and uncomplicated processing of repairs in the event of service, thus providing a high level of security throughout the entire life cycle
- Free of charge: Included directly with purchase with no hidden additional costs!



LANCOM GS-4554XUP



- 54-port stackable 2.5G PoE++ multi-Gigabit access switch
- 48x 2.5G multi-Gigabit Ethernet ports, plus 4x 10G SFP+ and 2x 40G QSFP+ uplink or stacking ports
- Up to 480 Gbps switching capacity and full layer 3 functionality
- Network redundancy via stacking
- PoE++ according to IEEE 802.3bt PD Type 4 (24x 2.5G ports), PoE+ according to IEEE 802.3af/at (24x 2.5G ports), and up to 1,440 watts PoE budget as the basis for Wi-Fi 6(E) access points

LANCOM GS-4554X / GS-4554XP



- 54-port stackable 2.5G multi-Gigabit access switch
- 12x 2.5 multi-Gigabit and 36x 1 Gigabit Ethernet ports, as well as 4x 10G SFP+ and 2x 40G QSFP+ uplink or stacking ports
- Up to 372 Gbps switch capacity and full layer 3 functionality
- Network redundancy through stacking
- LANCOM GS-4554XP additionally with PoE+ according to IEEE 802.3af/at with up to 1,440 watts PoE budget as the basis for Wi-Fi 6(E) access points

LANCOM GS-4530XUP



- 30-port stackable 2.5G PoE++ multi-Gigabit access switch
- 24x 2.5 multi-Gigabit Ethernet ports as well as 4x 10G SFP+ and 2x 40G QSFP+ uplink or stacking ports
- Up to 360 Gbps switch capacity and full layer 3 functionality
- Network redundancy through stacking
- PoE++ according to IEEE 802.3bt PD Type 4 with up to 1,440 watts PoE budget as the basis for Wi-Fi 6(E) access points

LANCOM GS-4530X / GS-4530XP



- 30-port stackable 2.5G multi-Gigabit access switch
- 12x 2.5 multi-Gigabit and 12x 1 Gigabit Ethernet ports as well as 4x 10G SFP+ and 2x 40G QSFP+ uplink or stacking ports
- Up to 324 Gbps switch capacity and full layer 3 functionality
- Network redundancy through stacking
- LANCOM GS-4530XP additionally with PoE+ according to IEEE 802.3af/at with up to 720 watts PoE budget as the basis for Wi-Fi 6(E) access points

Layer 3 Lite SME-Class Access Switches

The fully managed access switches of the XS- and GS-3000 series are a cost-efficient solution for small and medium-sized enterprises (SME). They offer basic layer 3 functions such as static routing and DHCP server functionality, simple management via proprietary CLI, and five years of replacement service. Mounting brackets for 19" racks are included with all models. Depending on the model, centralized power supply of PoE end devices is also possible without additional electrical installation.



LANCOM XS-3550YUP

- 50-port 10G PoE++ multi-Gigabit access switch
- 8x 10 multi-Gigabit and 40x 1 Gigabit Ethernet ports as well as 2x 25G SFP28 uplink ports for up to 340 Gbps switching capacity – ideal for Wi-Fi 7
- 1x hot-swappable PSU and a separate slot for expansion with a second power supply unit
- PoE++ according to IEEE 802.3bt PD Type 4 (8x 10G ports), PoE+ according to IEEE 802.3af/at (40x 1G ports) and with up to 1,440 watts PoE budget as the basis for Wi-Fi 7 access points
- Non-stop PoE function – continuous power supply to connected PoE devices in the event of a software update



LANCOM XS-3526YUP

- 26-port 10G PoE++ multi-Gigabit access switch
- 8x 10 multi-Gigabit and 16x 1 Gigabit Ethernet ports as well as 2x 25G SFP28 uplink ports for up to 292 Gbps switching capacity – ideal for Wi-Fi 7
- PoE++ according to IEEE 802.3bt PD Type 4 (8x 10G ports), PoE+ according to IEEE 802.3af/at (16x 1G ports) and with up to 720 watts PoE budget as the basis for Wi-Fi 7 access points
- Non-stop PoE function – continuous power supply to connected PoE devices in the event of a software update



LANCOM XS-3510YUP

- 10-port 10G PoE++ multi-Gigabit access switch
- 4x 10 multi-Gigabit and 4x 1 Gigabit Ethernet ports as well as 2x 25G SFP28 uplink ports for up to 188 Gbps switching capacity – ideal for Wi-Fi 7
- PoE++ according to IEEE 802.3bt PD Type 4 (4x 10G ports), PoE+ according to IEEE 802.3af/at (4x 1G ports) and with up to 370 watts PoE budget as a basis for Wi-Fi 7 access points
- Non-stop PoE function – continuous power supply to connected PoE devices in the event of a software update

LANCOM GS-3652X / GS-3652XP / GS-3652XUP



- 52-port 2.5G multi-Gigabit access switch
- 12x 2.5 multi-Gigabit and 36x 1 Gigabit Ethernet ports as well as 4x 10G SFP+ uplink ports for up to 212 Gbps switching capacity – ideal for Wi-Fi 6
- **LANCOM GS-3652XP** additionally with PoE+ according to IEEE 802.3af/at on all 48 Ethernet ports with up to 740 watts PoE budget
- **LANCOM GS-3652XUP** additionally with PoE++ according to IEEE 802.3bt PD Type 4 (12x 2.5G ports), PoE+ support according to IEEE 802.3af/at (36x 1G ports) and with up to 1,440 watts PoE budget

LANCOM GS-3628X / GS-3628XP / GS-3628XUP



- 28-port 2.5G multi-Gigabit access switch
- 12x 2.5 multi-Gigabit and 12x 1 Gigabit Ethernet ports as well as 4x 10G SFP+ uplink ports for up to 164 Gbps switching capacity – ideal for Wi-Fi 6
- **LANCOM GS-3628XP** additionally with PoE+ according to IEEE 802.3af/at on all 24 Ethernet ports with up to 370 watts PoE budget
- **LANCOM GS-3628XUP** additionally with PoE++ according to IEEE 802.3bt PD Type 4 (12x 2.5G ports), PoE+ according to IEEE 802.3af/at (12x 1G ports) and with up to 740 watts PoE budget

LANCOM GS-3510XP



- 10-port 2.5G PoE+ multi-Gigabit access switch
- 4x 2.5 multi-Gigabit and 4x 1 Gigabit Ethernet ports as well as 2x 10G SFP+ uplink ports for up to 68 Gbps switching capacity – ideal for Wi-Fi 6
- PoE+ according to IEEE 802.3af/at with up to 130 watts PoE budget
- Zero-dB design – ideal for small and home offices



LANCOM GS-3252P

- 52-port PoE+ Gigabit access switch
- 48x 1 Gigabit Ethernet ports (36 of which with PoE+ according to IEEE 802.3af/at with up to 370 watts PoE budget) and 4x 10G SFP+ uplink ports for up to 176 Gbps switching capacity



LANCOM GS-3126X / GS-3126XP

- 26-port Gigabit access switch
- 24x 1 Gigabit Ethernet ports and 2x 10G SFP+ uplink ports for up to 88 Gbps switching capacity
- **LANCOM GS-3126XP** additionally with PoE+ according to IEEE 802.3af/at on all 24 Ethernet ports with up to 185 watts PoE budget

Layer 2 SME-Class Access Switches

In network structures with basic performance requirements, these fully managed access switches ensure efficient task distribution and tailor-made networking scenarios. Two 19" mounting brackets, configuration cables, and power cables are included in the scope of delivery.

New



LANCOM GS-2426 / GS-2426P

- 26-port Gigabit access switch
- 24x 1 Gigabit Ethernet ports and 2x combo ports (TP/SFP) for up to 52 Gbps switch capacity
- **LANCOM GS-2426** is fanless – ideal for noise-sensitive environments
- **LANCOM GS-2426P** additionally with PoE+ according to IEEE 802.3af/at with up to 185 watts PoE budget and quiet fan

New

LANCOM GS-2412 / GS-2412P

- 12-port Gigabit access switch
- 10x 1 Gigabit Ethernet ports and 2x SFP ports for up to 24 Gbps switch capacity
- Compact, fanless housing design
- **LANCOM GS-2412P** additionally with PoE+ according to IEEE 802.3af/at with up to 130 watts PoE budget



Unmanaged Switch

As an energy-efficient PoE distributor, the switch is the ideal plug-and-play solution for integrating office equipment into simple networks.

New

LANCOM GS-1208P

- 8-port PoE+ unmanaged Gigabit switch
- 8x 1 Gigabit Ethernet ports for up to 16 Gbps switch capacity
- PoE+ according to IEEE 802.3af/at with up to 65 watts PoE budget
- Fanless, compact housing design for quiet operation



For more information on all core, aggregation, access, and unmanaged switches, visit: www.lancom-systems.com/products/switches



Industrial-Class Access Switches

The robust layer 3 lite switches are designed for harsh industrial environments such as manufacturing plants, logistics centers, and critical infrastructures (e.g., wind power or photovoltaic plants). With their resistance to extreme conditions and cloud management, a uniform switch infrastructure can also be implemented in industrial environments.

New

LANCOM IGS-3128XF

- 28-port Gigabit fiber industrial access switch
- 24x 1G SFP ports (thereof 4 combo ports TP/SFP) and 4x 10G SFP+ ports for up to 128 Gbps switching capacity
- Internal AC power supply as well as AC and DC input for maximum flexibility in power supply selection
- Rugged metal housing for a temperature range from -20 °C to +55 °C



LANCOM IGS-3510XUP

- 10-port 2.5G PoE++ multi-Gigabit industrial access switch
- 4x 2.5G multi-Gigabit and 4x 1G Ethernet ports, plus 2x 10G SFP+ uplink ports for up to 68 Gbps switching capacity
- PoE++ according to IEEE 802.3bt PD Type 4 on 4x 2.5G ports, PoE+ according to IEEE 802.3af/at on 4x 1G ports, and with up to 360 watts PoE budget for Wi-Fi 6 access points
- Fanless, rugged aluminum housing for resistance to shock and vibration in outdoor environments (-40 °C to +60 °C)



LANCOM DPSU-480/55

- 480-watt DIN-rail power supply for LANCOM IGS-3510XUP
- Protection against power spikes, overvoltage, short circuit, and overheating



LANCOM Wi-Fi 7

Wi-Fi 7 opens up new possibilities for powerful and sustainable Wi-Fi infrastructures. The LANCOM Wi-Fi 7 indoor access point portfolio covers all requirements – from entry-level to high-end solutions – and combines speed, cloud automation, and energy efficiency.

Developed and operated consistently according to European data protection and security standards, the solution portfolio ensures long-term digital sovereignty.



LANCOM LX-7500

Up to 19 Gbps

BLE & USB 3.0 port

Scan radio & dual PoE-in

Learn more at: www.lancom-systems.com/wifi-7



	LX-7500	LX-7300	LX-7400	LX-7200E	LX-7200	LW-700
	High-density Wi-Fi 7 without compromises	Scalable high-density Wi-Fi 7	Wi-Fi 7 all-rounder	Retail hero for ESL infrastructures	Wi-Fi 7 for mid-sized networks	Compact & cost-efficient for practices & offices
Capability	High-end	High-performance	performance	performance	performance	value
User density	very high	high	high	low to medium	low to medium	low
Data volume	very high	medium	high	medium	medium	low
Gross data rate	19 Gbps	9.3 Gbps	18 Gbps	9.3 Gbps	9.3 Gbps	3.6 Gbps
LAN connector	1x 10G Ethernet, 1x 2.5G Ethernet	1x 10G Ethernet, 1x 2.5G Ethernet	1x 10G Ethernet, 1x 1G Ethernet	1x 2.5G Ethernet, 1x 1G Ethernet	1x 2.5G Ethernet, 1x 1G Ethernet	1x 2.5G Ethernet
Multi-user MIMO streams (6, 5 & 2.4 GHz)	4x4 4+4+4	2x2 2+2+2	4x4/2x2 4+4+2	2x2 2+2+2	2x2 2+2+2	2x2 2+2
BLE standard USB port	5.1 3.0	5.1 2.0	5.4 2.0	5.4 2.0	5.4 2.0	–
Power over Ethernet	PoE++ (802.3bt) / dual PoE	PoE++ (802.3bt)	PoE++ (802.3bt)	PoE+ (802.3at)	PoE+ (802.3at)	PoE+ (802.3at)
Position sensor / power meter	✓	✓	✓	✓	✓	–
Protection class & fire resistance	IP50, UL2043 certified	IP50, UL2043 certified	IP50, UL2043	IP50, UL2043	IP50, UL2043	–
Special features	Dual PoE-in for seamless failover or load balancing, scan radio, support for digital displays via 3rd-party USB*	Scan radio, support for digital displays via 3rd-party USB*	Support for digital displays via 3rd-party USB*	Integrated support for digital displays or via 3rd-party USB*	Support for digital displays via 3rd-party USB*	–

* Vusion, Solum, Hanshow

Discover LANCOM Wi-Fi 7!

SECURE



- **Radio field monitoring:** Dedicated scan radio on LX-7500 & LX-7300
- **Position sensor:** Monitoring of correct installation and alignment as well as notification of unauthorized disassembly on the LX-7000 series
- **Firmware engineered in Germany:** Built-in Security, secure boot, and regular feature and security updates
- **Integrated mounting security** counteracts opportunistic theft

SUSTAINABLE



- **LANCOM Sustainability Mode:** Reduced energy consumption in Wi-Fi
- **Energy monitoring for the entire network:** CO₂ emissions and reduction
- **Environmentally friendly packaging:** Plastic-free packaging and optimized scope of delivery by avoiding packaging waste and electronic waste
- **100% recyclable housing** without glued individual components

AUTOMATED



- **Cloud-managed Wi-Fi:** Zero-touch commissioning, auto-config, 24/7 monitoring & alerting, and Wi-Fi anomaly detection via LMC
- **Radio resource management:** Self-learning, cloud-based automation solution
- **LANCOM Active Radio Control 2.0** optimizes Wi-Fi networks of all sizes
- **Energy saving without risk:** Intelligent, cloud-based, dynamically adapting optimization solution LANCOM Active Power Control
- **Smart data collection and analysis** for future AI-based functions



EN 60601-1-compliant

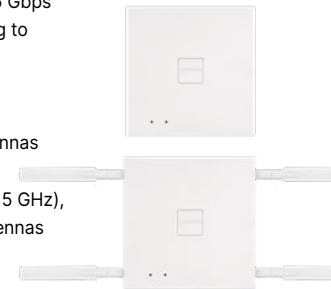
All current Wi-Fi 7 and Wi-Fi 6 access points are suitable for reliable use in medical environments with electrical medical devices!

Wi-Fi 6 Indoor Access Points

Wi-Fi 6 provides stable performance for applications in home and business networks – ideal for hotels, offices, medical practices, and branches that depend on reliable, resilient Wi-Fi.

LANCOM LX-6400 / LX-6402

- 4x4 MU-MIMO dual-band Wi-Fi 6 for high user densities
- Parallel operation in 2.4 and 5 GHz for up to 3.6 Gbps
- 1x 2.5 Gigabit Ethernet port (incl. PoE according to IEEE 802.3at) and 1x 1 Gigabit Ethernet port
- Power supply via PoE or external power supply
- IoT support: BLE 5.0 and USB 3.0
- **LANCOM LX-6400** with 8 integrated 180° antennas
- **LANCOM LX-6402** with 4 flexibly adjustable dual-band omnidirectional antennas (2.4 GHz / 5 GHz), alternatively: connection of optional sector antennas



LANCOM LX-6200 / LX-6212

- 2x2 MU-MIMO dual-band Wi-Fi 6 for medium user densities
- Parallel operation in 2.4 and 5 GHz for up to 1.8 Gbps
- 1x 1 Gigabit Ethernet port incl. PoE according to IEEE 802.3at
- Power supply via PoE or external power supply unit
- IoT support: BLE 5.1 and USB 2.0
- **LANCOM LX-6200** with 4 integrated 180° antennas
- **LANCOM LX-6212** additionally with 1x 1 Gigabit Ethernet port and 4 flexibly adjustable dual-band omnidirectional antennas (2.4 GHz / 5 GHz), alternatively: connection of optional ceiling, sector, or directional antennas



Further information on all Wi-Fi products can be found at: www.lancom-systems.com/products/wireless-lan

Find the optimal access point!

→ **AI chatbot:** Get advice on tailor-made product selection for your Wi-Fi infrastructure!

www.lancom-systems.com/chatbot

→ **Matchmaker:** Answer questions now and immediately find the right Wi-Fi 7/6 access point:

www.lancom-systems.com/access-point-matchmaker

Outdoor Access Points

Whether expansive outdoor areas or harsh indoor environments – these access points withstand all conditions with dustproof and waterproof housings. This allows you to connect even hard-to-reach locations such as cold storage facilities, ski resorts, or machines in warehouse logistics.

LANCOM OX-6400 / OX-6402

- 4x4 MU-MIMO dual-band Wi-Fi 6 for outdoor areas with medium and high user densities
- Parallel operation in 2.4 and 5 GHz for up to 3.6 Gbps
- 2x 2.5 Gigabit Ethernet ports (1x PoE-in, 1x PoE-out) and BLE 5.1
- PoE passthrough for connecting an additional PoE network device such as an IP camera
- Rugged IP67 metal housing with integrated status LEDs
- Reliable operation in extreme temperatures from -30 °C to +65 °C
- LANCOM OX-6400 with integrated 70° sector antennas
- LANCOM OX-6402 with 4 external omnidirectional antennas, alternatively connection of optional sector antennas



New

LANCOM OW-702

- 2x2 MU-MIMO dual-band Wi-Fi 7 for demanding outdoor areas with low to medium user densities
- Parallel operation in 2.4 and 5 GHz for up to 3.6 Gbps
- 1x 2.5 Gigabit Ethernet port incl. PoE according to IEEE 802.3at and BLE 5.4
- Rugged IP67 metal housing with integrated status LEDs
- Reliable operation in extreme temperatures from -30 °C to +65 °C
- Includes 4 external omnidirectional antennas, alternatively connection of optional sector antennas



LANCOM OW-602

- 2x2 MU-MIMO dual-band Wi-Fi 6 for outdoor areas with low user densities
- Parallel operation in 2.4 and 5 GHz for up to 1.8 Gbps
- 2x 1G Ethernet ports incl. PoE according to IEEE 802.3at and BLE 5.1
- Rugged IP67 housing with reliable operation in extreme temperatures from -30 °C to +65 °C
- Includes 4 omnidirectional antennas, alternatively connection of optional sector antennas



You can find suitable Wi-Fi antennas at:
www.lancom-systems.com/products/wireless-lan/accessories

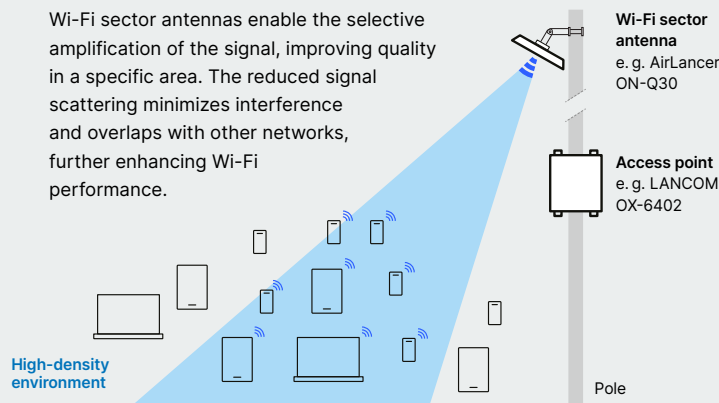


Which outdoor Wi-Fi antenna is suitable for which scenario and access point?

Find out more in the antenna overview:

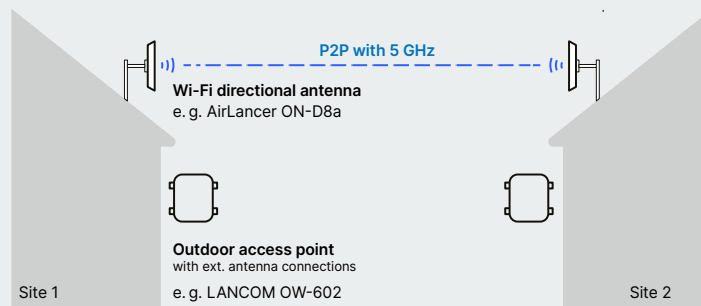
Wi-Fi coverage in high-density environments

Wi-Fi sector antennas enable the selective amplification of the signal, improving quality in a specific area. The reduced signal scattering minimizes interference and overlaps with other networks, further enhancing Wi-Fi performance.



High-speed point-to-point connections (P2P)

With P2P connections, distant buildings in outdoor areas can be reliably connected via Wi-Fi, thanks to directional antennas that eliminate the need for complex cabling or costly dedicated lines for network expansion.



WLAN Controllers

Even for networks that are not managed via the LANCOM Management Cloud, you can rely on efficient WLAN management. LANCOM WLAN controllers (WLCs) serve as the central instance for fully automated configuration of all access points and Wi-Fi gateways within the network.



LANCOM WLC-2000

- Central firmware rollout, monitoring, and management of 25 to 2,000 access points and Wi-Fi gateways
- Zero-touch deployment of connected Wi-Fi devices
- Integrated hotspot functionality



LANCOM WLC-60

- Central firmware rollout, monitoring, and management of 6 to 60 access points and Wi-Fi gateways
- Zero-touch deployment of connected Wi-Fi devices
- Integrated hotspot functionality

vRouter

LANCOM vRouter as virtual WLAN Controller (vWLC)

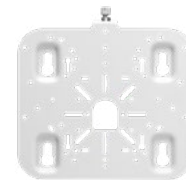
- Software-based WLAN controller for operating up to 1,500 access points in a virtualized environment



Wi-Fi Accessories

LANCOM LX-7000 Universal Mount

- Universally compatible mounting plate for LANCOM access points of the LX-7000 series
- Compatible with drill holes of mounting brackets from earlier LANCOM access points



LANCOM LX-7000 T-Bar Mount

- Mounting element for flexible and easy installation of LANCOM access points of the LX-7000 series on suspended ceilings



LANCOM PoE++ 10G Injector

- 1-port PoE injector with multi-Gigabit Ethernet support and link speeds up to 10 Gbps
- Power supply for LANCOM access points via PoE, with support for PoE++ (IEEE 802.3bt up to 65 W), and backward compatibility with IEEE 802.3af/at



AirLancer SN-LAN-10G

- 10G surge protection adapter for easy installation on LAN devices with RJ45 connectors
- Reliable operation even in demanding temperature ranges from -40 °C to +85 °C



AirLancer SurgeProtect

- Surge protection adapter for installation between LANCOM outdoor Wi-Fi antennas (ON) and access points



LANCOM Wall Mount

- Stable mounting plate for attaching LANCOM access points of the LX series as well as the LANCOM 750-5G
- Theft protection via fourfold Kensington lock and included padlock



Additional mounting devices, antennas, power supplies, and cables can be found at: www.lancom-systems.com/products/wireless-lan/accessories

Flexible extensions for your devices

Equip your products with powerful add-on features – individually, flexibly, and cost-efficiently. This allows you to configure your devices according to your requirements and sustainably strengthen your network.

New

LANCOM Option **Security Essentials**

Upgrade for Secure SD-WAN (central site) gateways and WLAN controllers with a cloud-based content filter incl. protection of minors*

LANCOM Option **BPjM Filter**

Upgrade for Secure SD-WAN gateways and WLAN controllers with the BPjM module of the Federal Agency for Child and Youth Media Protection (BzKJ)*

LANCOM Option **VPN**

Upgrade of the number of available VPN tunnels (IPSec and WireGuard) in Secure SD-WAN gateways*

LANCOM Option **WLC Basic**

Upgrade for Secure SD-WAN gateways with WLAN controller functionality

LANCOM Option **WLC Upgrade**

Upgrade of the number of access points and WLAN-capable Secure SD-WAN gateways managed by the WLAN controller

LANCOM Option **High Availability Clustering**

Upgrade for Secure SD-WAN (central site) gateways and WLAN controllers for configuring highly available device clusters

LANCOM Option **All-IP**

Upgrade for extending Secure SD-WAN gateways with professional telephony management

LANCOM Option **VoIP +10**

Upgrade for Secure SD-WAN gateways with 10 additional VoIP phone numbers (max. 40) and 10 additional SIP lines (max. 55)



LANCOM Option **Public Spot**

Upgrade for Secure SD-WAN gateways, WLAN controllers, and access points for setting up secure guest access

LANCOM Option **Public Spot PMS Accounting Plus**

Upgrade of the LANCOM Public Spot Option for integration of the hotspot solution into hotel billing systems (Property Management System, PMS)

Cloud-managed hotspot

The LANCOM Management Cloud (LMC) enables the provisioning of one or more Wi-Fi hotspots with just a few clicks. Unlike networks not managed via the cloud, no additional gateway or WLAN controller with the LANCOM Public Spot Option is required – a valid LMC license on the participating devices is sufficient.

* These functions are already included in the LANCOM UF (SAG) Full License of the LANCOM R&S® Unified Firewalls.

More information on all software options can be found at: www.lancom-systems.com/products/software-accessories/software-options



From immediate assistance to long-term protection of your networks and devices

Our service and support team supports you in operating your network infrastructure in a stable, secure, and high-performance manner – from initial deployment through ongoing operation. Efficient fault analysis and practical (remote) troubleshooting allow network issues to be precisely identified and sustainably resolved. Choose flexibly between add-on services or LANcare products and rely on professional support – exactly when it matters.

Services: Individual support for your networks

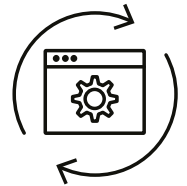
Whether acute network issues or strategic development, our specialists support you with planning, configuration, and optimization of your network infrastructure. The WLAN Survey Service, for example, transparently shows how to implement or improve your Wi-Fi infrastructure in a resource-efficient manner.

LANCOM Service
**Consulting
Day**

LANCOM Service
**WLAN
Survey**

All service variants can be found online at:
www.lancom-systems.com/products/services-support/services

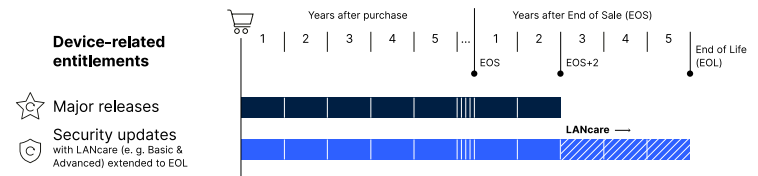
More information on service and support offerings – including your support contact, self-service options available online at any time, and security advisories – can be found at:
www.lancom-systems.com/service-support



Plannable security across the entire product lifecycle

With our lifecycle management, you benefit from reliable and predictable software maintenance for your LANCOM products. Even after official End of Sale (EOS), you will receive security updates and major releases with new features for at least two additional years*. Your advantage: you remain technologically up to date, reduce security risks, and protect your investment – without unplanned migration pressure.

For comprehensive protection of your network infrastructure, LANcare is the logical complement: you establish a resilient and seamless security strategy and receive security updates even up to the End of Life of the device. This allows you to continue operating your infrastructure securely and predictably instead of being forced to migrate prematurely for security reasons.



LANcare: Full protection for your LANCOM devices

Benefit from fast response times, guaranteed security updates, and replacement services such as the optional next-business-day advance replacement (NBD). With LANcare Direct, for example, you receive direct manufacturer support in addition to security updates – either during business hours (10/5) or around the clock (24/7).

LANCOM Service
LANcare Direct

Discover the right LANcare variant for your requirements in the practical comparison overview at: www.lancom-systems.com/products/services-support/lancare

* Different regulations apply to switches with Limited Lifetime Warranty (LLW) and LANCOM R&S® Unified Firewalls. Further information on the lifecycle management can be found at:
www.lancom-systems.com/lifecycle

LANacademy

Understanding, building, and maintaining network scenarios does not have to be a challenge. We equip you with the right know-how and turn you into an IT infrastructure professional. In LANacademy workshops, you gain specific knowledge directly from the manufacturer and can put it into practice immediately. The workshops are optimally tailored to specialist resellers, system integrator technicians, system administrators, and IT decision-makers, and can be conducted flexibly.

Training formats at a glance

- **Expert-led classroom:** Classic workshop format with trainers, equipment, and participants in our training center or on site at the customer's premises
- **Expert-led virtual classroom:** Location-independent workshops with trainers and equipment in one location and remote participation
- **Web-based training (WBT):** Location-independent, self-directed learning with exclusive materials and flexible time management

Knowledge that connects

Join us on the path to becoming a true LANCOM IT professional!

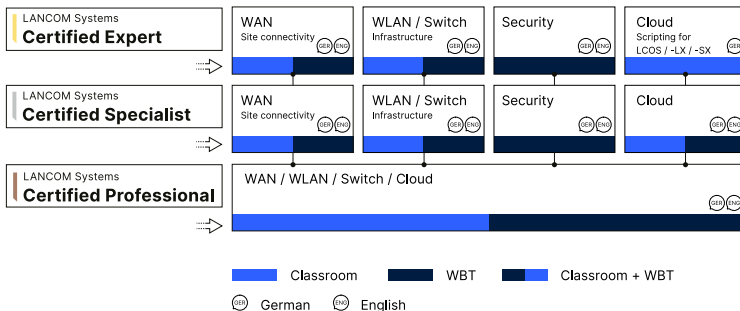
More at: www.lancom-systems.com/lanacademy



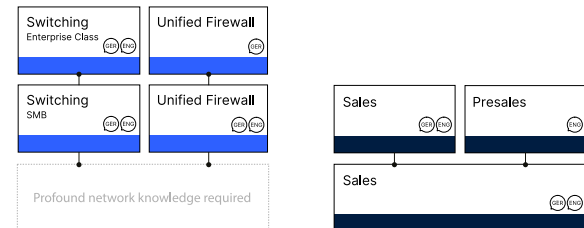
Workshop portfolio

- **Certification workshops:** Structured knowledge in theory and practice for implementing network infrastructures, with certifications as LANCOM Certified Professional, Specialist, or Expert as part of the workshops or as a separate remote certification appointment
- **Technology workshops**, available as:
 - Fundamental workshops for conveying technical basics
 - Focus workshops for in-depth, single-topic knowledge
 - Kick-start workshops (2–3 hours) as ideal orientation for new customers
- **Sales workshops:** Communication of solution-oriented added value to support sales activities and increase success in customer discussions for sales and presales staff, including certification as LANCOM Certified Specialist Sales / Presales or LANCOM Certified Professional Sales
- **Knowledge events:** LANupdate as a roadshow around our products, solutions, and trends, as well as apprentice workshops as an introduction to configuring our devices

Certification Workshops



Sales Workshops





ROHDE & SCHWARZ CYBERSECURITY

Products from Rohde & Schwarz Cybersecurity protect public authorities and enterprises with high security and approval requirements against dynamic cyber threats. The portfolio includes high-speed network encryption as well as Zero Trust–based endpoint security. Many solutions are approved by the German Federal Office for Information Security (BSI) and support the processing of VS-NfD data for demonstrably secure communication and data storage in critical environments.

R&S®ComSec – Operational capability – anytime, mobile, and everywhere	57
R&S®Trusted Objects Manager – Central security control	58
R&S®SITLine – Network encryption	60
R&S®Trusted Disk – High-security disk encryption	62

ROHDE & SCHWARZ
Make ideas real



R&S®ComSec Operational capability – anytime, mobile, and everywhere.

- ▶ Private and professional use of iPhone and iPad up to VS-NfD (COPE) and, since December 2025, also approved for NATO RESTRICTED.
- ▶ Use of native Apple apps (Mail, Calendar, Contacts) without containers – while maintaining secure separation of data and connections (per-app VPN, per-account VPN).

Hardware and additional components

R&S®Trusted Objects Manager

Hardware-based PKI infrastructure for certificate management, optionally with R&S®Trusted VPN Gateway (BSI-approved) as a hardware-based layer 3 gateway for VS-NfD and non-VS-NfD environments.

iPhone und iPad

Apple-based frontend infrastructure (standard devices, native operating system), including Apple Business Manager for integration into MDM.

MDM server (approved by BSI)

Installs certificates from the R&S®Trusted Objects Manager on Apple end devices (ACME protocol). Optional bright-site or dark-site installation. Integration into existing environments is possible.

The BSI recommends private use of service devices without container solutions. Biometric methods such as Face ID and Touch ID are also approved in this context.



R&S®Trusted Objects Manager CENTRAL SECURITY CONTROL

The R&S®Trusted Objects Manager enables centralized and simple management of specialized security products such as R&S®SITLine, R&S®Trusted VPN, Trusted Disk, and Trusted Identity Manager. A single instance can scalably manage up to 50,000 clients. Seamless integration into existing LDAP directory services such as Microsoft Active Directory, Lotus Domino, Novell eDirectory, and OpenLDAP is supported. Optional standby instances can be deployed for increased availability.

Special characteristics of centralized control with the R&S®Trusted Objects Manager

Intuitive operation

The R&S®Trusted Objects Manager is characterized by process-oriented user guidance with an intuitive user experience and flexible user and rights management. An IT administrator can manage the entire operational lifecycle of Rohde & Schwarz Cybersecurity components via a secure web interface. A REST API is also available for automation and easy integration.

Maximum security with optional Public Key Infrastructure (PKI)

Optionally, a PKI can be integrated via the R&S®Trusted Objects Manager – a security component for increased confidentiality, integrity, and authenticity of data. The PKI can be set up and operated independently without third parties. R&S Cybersecurity provides support during implementation.



VS-NfD, EU RESTRICTED, and NATO RESTRICTED

The R&S®Trusted Objects Manager is authorized by the German Federal Office for Information Security (BSI) to process VS-NfD, EU RESTRICTED, and NATO RESTRICTED data.

The effectiveness of a secured environment depends directly on how efficiently control over the respective components is integrated into processes. The R&S®Trusted Objects Manager acts as a daily digital assistant for simple and secure administration of R&S security components. Based on operational workflows, the focus lies on intuitive operation of the central control unit – particularly when reducing process complexity and eliminating sources of error.

R&S®SITLine ETH NG NETWORK ENCRYPTION

Future-proof network encryption for public authorities, carriers, and critical and high-security enterprises

Secure communication. Made in Germany. Die R&S®SITLine ETH NG protects sensitive data using state-of-the-art encryption at layer 2 – transparently, reliably, and approved. Designed for public authorities, carriers, critical organizations, and enterprises with the highest security requirements.



Future-ready technology that adapts and anticipates

R&S®SITLine ETH-S	R&S®SITLine ETH-XL
Compact, fanless, energy-efficient design with small form factor	Modular up to 100 Gbps
Up to 10 Gbps	Flexible configurations such as 8x 10 Gbps, 4x 10 Gbps, or 2x 100 Gbps
Ideal for:	Ideal for:
<ul style="list-style-type: none"> ▶ Remote locations without server racks ▶ DIN rail installations ▶ Critical enterprises with high security requirements ▶ Small authority locations and edge connections 	<ul style="list-style-type: none"> ▶ Data centers and backbone connections (2x 100 Gbps) ▶ Connections to regional distribution sites (4x 10 Gbps, 8x 10 Gbps) ▶ Enterprises with high site density and elevated security awareness
Fanless (passive cooling)	2 enclosure fans, hot-swappable
Approx. 4.5", 1 height unit	19" rack, 1 height unit

Benefits of our network encryptors

- ▶ "IT Security made in Germany" – over 30 years of cryptographic expertise
- ▶ BSI approval for VS-NfD (RESTRICTED), EU RESTRICTED, and NATO RESTRICTED
- ▶ Dedicated hardware and software for market-leading encryption performance
- ▶ State-of-the-art cryptographic methods and standards for long-term security requirements
- ▶ High usability through centralized security management

→ R&S®Trusted Objects Manager

Core functions

Future-proofing: Integration of new post-quantum cryptography (PQC) methods without hardware replacement

Certified security: Integrity and confidentiality at layer 2

Simple management: Central certificate management (TOM), SNMP, and zero-touch provisioning

Seamless integration: Application- and protocol-independent, no changes to routing / QoS/SLAs

Deployment scenarios

Point-to-point: Secure connections for sensitive communication (e.g. public authorities)

Multipoint / full-mesh: Scalable security for complex networks (public authorities, carriers, critical infrastructures) with up to 1,000 connections per line

Data centers: High performance (up to 2x 100 Gbps) for high availability and cloud infrastructures

Site connectivity: Secure multipoint connections with R&S®SITLine ETH-XL (8x 10 Gbps)

Periphery / edge security: Compact R&S®SITLine ETH-S devices for integrity protection, real-time capability, and low power consumption

R&S® Trusted Disk HIGH-SECURITY DISK ENCRYPTION

R&S® Trusted Disk protects classified information at the confidentiality levels “VS-NfD” (RESTRICTED), “EU RESTRICTED”, and “NATO RESTRICTED” against unauthorized access – especially when endpoints are powered off, for example in cases of loss, theft, or maintenance. This ensures that data remains protected even outside controlled environments, reducing risks in transport, deployment, and service scenarios.

Benefits for enterprises

- ▶ Maximum data security combined with simple administration
- ▶ Scalable solution for organizations with high protection requirements, suitable for deployments from single sites to large fleets
- ▶ Centrally enforceable security policies and effective operational monitoring support governance, auditability, and uniform security standards



VS-NfD,
EU RESTRICTED,
NATO RESTRICTED

More about
R&S® Trusted Disk

Maximum protection for Windows-based endpoints

R&S® Trusted Disk is designed for enterprise and public-sector environments and supports notebooks, tablets, desktop PCs, and vehicle PCs (police and military). In addition, connected USB storage devices and project-specific Windows servers are supported. This makes the solution suitable for stationary workplaces as well as mobile and decentralized deployment scenarios while maintaining a consistent security architecture across device categories.

Maximum security for sensitive data

- ▶ Full encryption of internal and external storage devices
- ▶ Automatic re-encryption in the event of security-critical incidents
- ▶ Tamper-resistant boot process
- ▶ Two-factor pre-boot authentication
- ▶ Stealth mode conceals the use of encryption

Simple administration

- ▶ Easy rollout to large numbers of devices with automated initialization
- ▶ No impact on productivity, as encryption runs in the background
- ▶ Maintenance mode enables unattended restarts
- ▶ Support for data recovery scenarios in business-critical exceptional situations

Centralized management

- ▶ Enterprise-grade remote management of endpoints, users, smart cards, groups, and rights for controlled authorization assignment
- ▶ Integration with LDAP directory services such as Active Directory
- ▶ Required device and user certificates can be generated via the integrated PKI and managed easily throughout their entire lifecycle